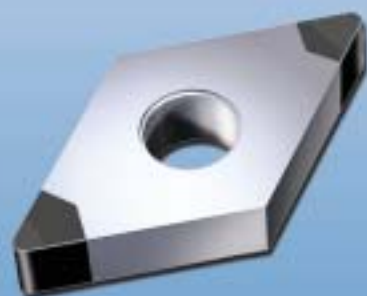
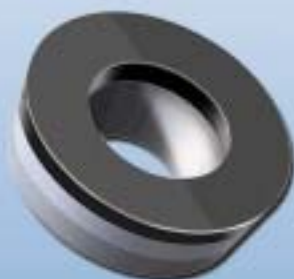
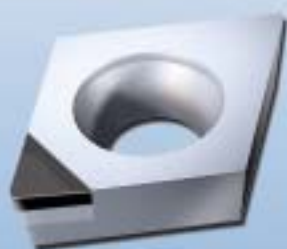


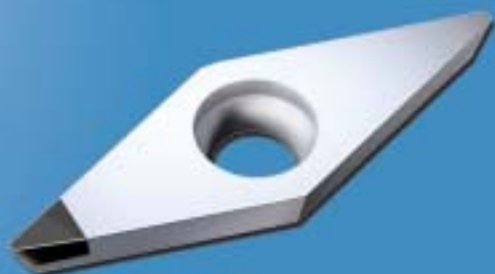


BECKER

PCD & CBN Inserts Mini Catalog


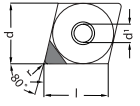
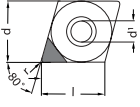
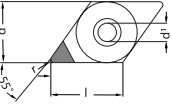
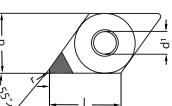
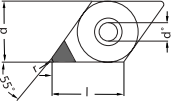
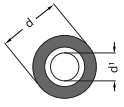


**A small selection of our
7000 standard items!**



BECKER PCD & CBN Inserts

Please include tip style and grade when ordering. Ordering Example: DCMW-21.52T-EW PBC-40

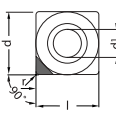
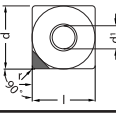
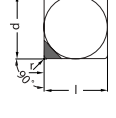
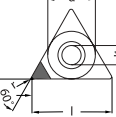
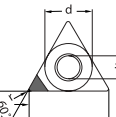
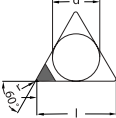
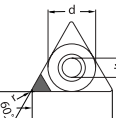

Insert	Designation	Tip Style		Dimensions					PBC-10	PBC-15	PBC-25	PBC-40	PDC	PDC-S
		CBN	PCD						CBN	PCD				
		d	d'	s	l	r	CBN				PCD			
	CCMW-21.50.5	T-EW		.250	.110	.094	.254	.008	■	■	■	■	■	■
	CCMW-21.51	T-EW		.250	.110	.094	.254	.016	■	■	■	■	■	■
	CCMW-21.52	T-EW		.250	.110	.094	.254	.031	■	■	■	■	■	■
	CCMW-32.50.5	T-EW		.375	.173	.156	.382	.008	■	■	■	■	■	■
	CCMW-32.51	T-EW		.375	.173	.156	.382	.016	■	■	■	■	■	■
	CCMW-32.52	T-EW		.375	.173	.156	.382	.031	■	■	■	■	■	■
	CNMA-430.5	T-EW		.500	.202	.187	.508	.008	■	■	■	■	■	■
	CNMA-431	T-EW	-MW	.500	.202	.187	.508	.016	■	■	■	■	■	■
	CNMA-432	T-EW	-MW	.500	.202	.187	.508	.031	■	■	■	■	■	■
	CNMA-433	T-EW	-MW	.500	.202	.187	.508	.047	■	■	■	■	■	■
	CPMW-21.50.5	T-EW		.250	.110	.094	.254	.008	■	■	■	■	■	■
	CPMW-21.51	T-EW		.250	.110	.094	.254	.016	■	■	■	■	■	■
	CPMW-21.52	T-EW		.250	.110	.094	.254	.031	■	■	■	■	■	■
	CPMW-32.50.5	T-EW		.375	.173	.156	.382	.008	■	■	■	■	■	■
	CPMW-32.51	T-EW		.375	.173	.156	.382	.016	■	■	■	■	■	■
	CPMW-32.52	T-EW		.375	.173	.156	.382	.031	■	■	■	■	■	■
	DCMW-21.50.5	T-EW		.250	.110	.094	.305	.008	■	■	■	■	■	■
	DCMW-21.51	T-EW		.250	.110	.094	.305	.016	■	■	■	■	■	■
	DCMW-21.52	T-EW		.250	.110	.094	.305	.031	■	■	■	■	■	■
	DCMW-32.50.5	T-EW		.375	.173	.156	.457	.008	■	■	■	■	■	■
	DCMW-32.51	T-EW		.375	.173	.156	.457	.016	■	■	■	■	■	■
	DCMW-32.52	T-EW		.375	.173	.156	.457	.031	■	■	■	■	■	■
	DNMA-331	T-EW		.375	.150	.187	.457	.016	■	■	■	■	■	■
	DNMA-332	T-EW		.375	.150	.187	.457	.031	■	■	■	■	■	■
	DNMA-431	T-EW	-MW	.500	.202	.187	.610	.016	■	■	■	■	■	■
	DNMA-432	T-EW	-MW	.500	.202	.187	.610	.031	■	■	■	■	■	■
	DNMA-433		-MW	.500	.202	.187	.610	.047	■	■	■	■	■	■
	DPMW-21.50.5	T-EW		.250	.110	.094	.305	.008	■	■	■	■	■	■
	DPMW-21.51	T-EW		.250	.110	.094	.305	.016	■	■	■	■	■	■
	DPMW-21.52	T-EW		.250	.110	.094	.305	.031	■	■	■	■	■	■
	DPMW-32.50.5	T-EW		.375	.173	.156	.457	.008	■	■	■	■	■	■
	DPMW-32.51	T-EW		.375	.173	.156	.457	.016	■	■	■	■	■	■
	DPMW-32.52	T-EW		.375	.173	.156	.457	.031	■	■	■	■	■	■
	RCMW-0602M0	T-VM	-VM	.236	.110	.094	--	--	■	■	■	■	■	■
	RCMW-0803M0	T-VM	-VM	.315	.134	.125	--	--	■	■	■	■	■	■
	RCMW-1003M0	T-VM	-VM	.394	.173	.125	--	--	■	■	■	■	■	■
	RCMW-10T3M0	T-VM	-VM	.394	.173	.156	--	--	■	■	■	■	■	■
	RCMW-1204M0	T-VM	-VM	.472	.173	.187	--	--	■	■	■	■	■	■

s= insert thickness

See full BECKER Catalog for complete selection!

BECKER PCD & CBN Inserts

Please include tip style and grade when ordering. Ordering Example: TCMW-32.52 PDC

Insert	Designation	Tip Style		Dimensions					PBC-10	PBC-15	PBC-25	PBC-40	PDC	PDC-S
		CBN	PCD						CBN				PCD	
		d	d ¹	s	l	r								
	SCMW-32.51	T-EW		.375	.173	.156	.375	.016	■	■	■	■	■	■
	SCMW-32.52	T-EW		.375	.173	.156	.375	.031	■	■	■	■	■	■
	SCMW-431	T-EW		.500	.217	.187	.500	.016	■	■	■	■	■	■
	SCMW-432	T-EW		.500	.217	.187	.500	.031	■	■	■	■	■	■
	SCMW-433	T-EW		.500	.217	.187	.500	.047	■	■	■	■	■	■
	SNMA-431	T-EW	-MW	.500	.202	.187	.500	.016	■	■	■	■	■	■
	SNMA-432	T-EW	-MW	.500	.202	.187	.500	.031	■	■	■	■	■	■
	SNMA-433	T-EW	-MW	.500	.202	.187	.500	.047	■	■	■	■	■	■
	SPGN-321	T-EW		.375	--	.125	.375	.016	■	■	■	■	■	■
	SPGN-322	T-EW		.375	--	.125	.375	.031	■	■	■	■	■	■
	SPGN-421	T-EW		.500	--	.125	.500	.016	■	■	■	■	■	■
	SPGN-422	T-EW		.500	--	.125	.500	.031	■	■	■	■	■	■
	SPGN-423	T-EW		.500	--	.125	.500	.047	■	■	■	■	■	■
	TCMW-21.50.5	T-EW		.250	.110	.094	.433	.008	■	■	■	■	■	■
	TCMW-21.51	T-EW		.250	.110	.094	.433	.016	■	■	■	■	■	■
	TCMW-21.52	T-EW		.250	.110	.094	.433	.031	■	■	■	■	■	■
	TCMW-32.51	T-EW		.375	.173	.156	.650	.016	■	■	■	■	■	■
	TCMW-32.52	T-EW		.375	.173	.156	.650	.031	■	■	■	■	■	■
	TCMW-32.53			.375	.173	.156	.650	.047	■	■	■	■	■	■
	TNMA-331	T-EW	-MW	.375	.150	.187	.650	.016	■	■	■	■	■	■
	TNMA-332	T-EW	-MW	.375	.150	.187	.650	.031	■	■	■	■	■	■
	TNMA-333	T-EW	-MW	.375	.150	.187	.650	.047	■	■	■	■	■	■
	TNMA-432		-MW	.500	.202	.187	.866	.031	■	■	■	■	■	■
	TNMA-433		-MW	.500	.202	.187	.866	.047	■	■	■	■	■	■
	TPGN-220.5	T-EW		.250	--	.125	.433	.008	■	■	■	■	■	■
	TPGN-221	T-EW		.250	--	.125	.433	.016	■	■	■	■	■	■
	TPGN-222	T-EW		.250	--	.125	.433	.031	■	■	■	■	■	■
	TPGN-321	T-EW		.375	--	.125	.650	.016	■	■	■	■	■	■
	TPGN-322	T-EW		.375	--	.125	.650	.031	■	■	■	■	■	■
	TPMW-1.81.50.5	T-EW		.219	.098	.094	.378	.008	■	■	■	■	■	■
	TPMW-1.81.51	T-EW		.219	.098	.094	.378	.016	■	■	■	■	■	■
	TPMW-1.81.52			.219	.098	.094	.378	.031	■	■	■	■	■	■
	TPMW-21.50.5	T-EW		.250	.110	.094	.433	.008	■	■	■	■	■	■
	TPMW-21.51	T-EW		.250	.110	.094	.433	.016	■	■	■	■	■	■
	TPMW-21.52			.250	.110	.094	.433	.031	■	■	■	■	■	■
	WNMA-431	T-EW	-MW	.500	.202	.187	.335	.016	■	■	■	■	■	■
	WNMA-432	T-EW	-MW	.500	.202	.187	.335	.031	■	■	■	■	■	■
	WNMA-433	T-EW	-MW	.500	.202	.187	.335	.047	■	■	■	■	■	■

s= insert thickness

See full BECKER Catalog for complete selection!

BECKER PCD & CBN Inserts

Please include tip style and grade when ordering. Ordering Example: DNMA-432T-PC-M SB40

Insert	Designation	Tip Style		Dimensions					SBC1	SB10	SB25	SB40	PDC	PDC-S
		CBN	PCD						CBN				PCD	
		d	d ¹	s	l	r								
	CNMA-431	T-PC-M		.500	.202	.187	.508	.016	■	■	■	■		
	CNMA-432	T-PC-M		.500	.202	.187	.508	.031	■	■	■	■		
	CNMA-433	T-PC-M		.500	.202	.187	.508	.047	■	■	■	■		
	DNMA-431	T-PC-M		.500	.202	.187	.610	.016	■	■	■	■		
	DNMA-432	T-PC-M		.500	.202	.187	.610	.031	■	■	■	■		
	DNMA-433	T-PC-M		.500	.202	.187	.610	.047	■	■	■	■		
	DNMA-441	T-PC-M		.500	.202	.250	.610	.016	■	■	■	■		
	DNMA-442	T-PC-M		.500	.202	.250	.610	.031	■	■	■	■		
	DNMA-443	T-PC-M		.500	.202	.250	.610	.047	■	■	■	■		
	RNGN-32	T		.375	--	.125	--	--	■	■	■	■		
	RNGN-42	T		.500	--	.125	--	--	■	■	■	■		
	RNGN-43	T		.500	--	.187	--	--	■					
	SNGN-321	T		.375	--	.125	.375	.016	■	■	■	■		
	SNGN-322	T		.375	--	.125	.375	.031	■	■	■	■		
	SNGN-323	T		.375	--	.125	.375	.047	■	■	■	■		
	SNGN-324	T		.375	--	.125	.375	.063	■	■	■	■		
	SNMA-431	T-PC-M		.500	.202	.187	.500	.016	■	■	■	■		
	SNMA-432	T-PC-M		.500	.202	.187	.500	.031	■	■	■	■		
	SNMA-433	T-PC-M		.500	.202	.187	.500	.047	■	■	■	■		
	TNMA-331	T-PC-M		.375	.150	.187	.650	.016	■	■	■	■		
	TNMA-332	T-PC-M		.375	.150	.187	.650	.031	■	■	■	■		
	TNMA-333	T-PC-M		.375	.150	.187	.650	.047	■	■	■	■		
	VBMW-330.5	T-EWS		.375	.173	.187	.654	.008		■	■	■	■	■
	VBMW-331	T-EWS		.375	.173	.187	.654	.016		■	■	■	■	■
	VBMW-332	T-EWS		.375	.173	.187	.654	.031		■	■	■	■	■
	VBMW-333			.375	.173	.187	.654	.047					■	■
	VCMW-220.5	T-EWS		.250	.114	.125	.437	.008		■	■	■	■	■
	VCMW-221	T-EWS		.250	.114	.125	.437	.016		■	■	■	■	■
	VCMW-330.5	T-EWS		.375	.173	.187	.654	.008		■	■	■	■	■
	VCMW-331	T-EWS		.375	.173	.187	.654	.016		■	■	■	■	■
	VCMW-332	T-EWS		.375	.173	.187	.654	.031		■	■	■	■	■
	VCMW-333			.375	.173	.187	.654	.047					■	■
	VNMA-331	T-PC-M		.375	.150	.187	.654	.016	■	■	■	■		
	VNMA-332	T-PC-M		.375	.150	.187	.654	.031	■	■	■	■		
	VNMA-333	T-PC-M		.375	.150	.187	.654	.047	■	■	■	■		
	WNMA-431	T-PC-M		.500	.202	.187	.335	.016	■	■	■	■		
	WNMA-432	T-PC-M		.500	.202	.187	.335	.031	■	■	■	■		
	WNMA-433	T-PC-M		.500	.202	.187	.335	.047	■	■	■	■		

s= insert thickness

See full BECKER Catalog for complete selection!



MiniCut PCD & CBN Tipped Boring Bars



X-GE Right or left hand

Right hand bar shown

Designation	Dimensions							PCD			MDC		
	dmin	l	d ⁹⁷	d ⁹⁷ mm	f	l ²	r	PDC-S					
X3.5F-GEUPR/L01	.157	3.15	.138	3.5	.079	.47	.004	■					
X3.5F-GEUPR/L02								■					
X04F-GEUPR/L01								■					
X04F-GEUPR/L02	.197	3.15	.157	4	.098	.55	.008	■					
X04F-GEUPR/L04								■					
X05H-GEUPR/L01								■					
X05H-GEUPR/L02	.236	3.94	.197	5	.118	.71	.008	■					
X05H-GEUPR/L04								■					
X06H-GEUPR/L01								■					
X06H-GEUPR/L02	.275	3.94	.236	6	.138	.79	.008	■					
X06H-GEUPR/L04								■					
X06H-GEUPR/L04								■					

R/L = please choose right or left hand designation

Boring bars with wiper edge also available

X-GE Right or left hand

Designation	Dimensions							CBN				
	dmin	l	d ⁹⁷	d ⁹⁷ mm	f	l ²	r	SBC1	SB10	SB25	SB40	
								BH	BL			
X3.5F-GEUPR/LT01	.157	3.15	.138	3.5	.079	.47	.004	■	■		■	■
X3.5F-GEUPR/LF02									■		■	■
X3.5F-GEUPR/LT02								■	■		■	■
X04F-GEUPR/LT01	.197	3.15	.157	4	.098	.55	.004	■	■		■	■
X04F-GEUPR/LF02									■		■	■
X04F-GEUPR/LT02								■	■		■	■
X04F-GEUPR/LF04									■		■	■
X04F-GEUPR/LT04								■	■		■	■
X05H-GEUPR/LT01								■	■		■	■
X05H-GEUPR/LF02	.236	3.94	.197	5	.118	.71	.008		■		■	■
X05H-GEUPR/LT02								■	■		■	■
X05H-GEUPR/LF04									■		■	■
X05H-GEUPR/LT04								■	■		■	■
X06H-GEUPR/LT01									■		■	■
X06H-GEUPR/LF02								.275	3.94	.236	6	.138
X06H-GEUPR/LT02	■	■		■	■							
X06H-GEUPR/LF04		■		■	■							
X06H-GEUPR/LT04	■	■		■	■							
X06H-GEUPR/LT04	■	■		■	■							
X06H-GEUPR/LT04	■	■		■	■							

R/L = please choose right or left hand designation

Boring bars with wiper edge also available

Inch Adapter Sleeves



Designation	D	d ^{h7} inch	d ^{h7} mm	L	Boring Bar
ADAP-0.625-35	.625	.138	3.5	3.94	X3.5F-GEUPR/L
ADAP-0.625-40	.625	.157	4	3.94	X04F-GEUPR/L
ADAP-0.625-50	.625	.197	5	3.94	X05H-GEUPR/L
ADAP-0.625-60	.625	.236	6	3.94	X06H-GEUPR/L

Metric O.D. Adapter sleeves also available

Technical Data

Polycrystalline Diamond - PCD

Application		Speed Range
Non-Ferrous Metallic Materials; aluminum, brass, bronze, copper, precious metals		1300 sfm - 8125 sfm with coolant
Non-Metallic Materials; plastic, graphite, GRP, CRP, ceramics		650 sfm - 3900 sfm with air
Grades	Composition - Performance	Application
PDC	Carbide reinforced diamond of fine grit size, good cutting edge sharpness and low cutting pressure for materials with <12% abrasive fillers	Finishing to general purpose cutting
PDC-S	Polycrystalline carbide reinforced diamond of coarse grit size, good edge sharpness with high flank wear resistance for materials >12% abrasive fillers	Finishing, general purpose cutting, and milling

Polycrystalline Cubic Boron Nitride - CBN

Application (BL)= Polycrystalline Cubic Boron Nitride with low content CBN | **(BH)**= Polycrystalline Cubic Boron Nitride with high content CBN

Ferrous Metallic Materials; cast iron, powdered metal, hardened steels (> 45HRC), super alloys

Grades	Composition - Performance	Application	Speed Range
SBC1 (BH)	Solid PCBN grade with high content medium grit size with exceptional flank wear resistance, thermal stability, and toughness for roughing of cast irons.	Grey cast iron Chilled cast iron Ni-hard Super alloys	1600 - 6500 sfm 165 - 975 sfm 165 - 975 sfm 1000 - 2900 sfm
SB10 (BH)	Solid PCBN grade with high content fine grit size for super finishing of grey cast iron with excellent flank wear resistance	Grey cast iron Super alloys Sintered powdered alloys	1600 - 2900 sfm 650 - 1600 sfm 500 - 1300 sfm
SB25 (BL)	Solid PCBN grade with low content fine grit size with high toughness for light to heavy interrupted cutting of steel when maximum D.O.C. required	Hardened steels ap= .012" - .079" Ra >32µin	400 - 600 sfm
SB40 (BL)	Solid PCBN grade with low content ultra fine grit size with high flank wear resistance for light to finish turning of hard steels with higher feed rates	Hardened steels ap= .012" - .060" for Ra 8µin - 32µin	400 - 600 sfm
PBC-10 (BH)	Carbide reinforced CBN grade with high content fine grit size with excellent flank wear resistance for HSC and super finishing of grey cast iron and finishing of super alloys.	Grey cast iron Super alloys Sintered powdered alloys	1600 - 6500 sfm 650 - 1600 sfm 500 - 1300 sfm
PBC-15 (BH)	Carbide reinforced CBN grade with high content fine grit size with very good flank wear resistance for cutting of cast iron and sintered alloys	Cast iron Super alloys Sintered powdered alloys	1600 - 2900 sfm 1650 - 2900 sfm 500 - 2000 sfm
PBC-25 (BL)	Carbide reinforced CBN grade with low content fine grit size with very good flank wear resistance and toughness for continuous to interrupted cutting of hard steel	Hardened steels ap= .003" - .016" Ra >32µin	400 - 800 sfm
PBC-40 (BL)	Carbide reinforced CBN grade with ultra low content fine grit size with excellent wear resistance for fine turning with high speeds and low D.O.C.	Hardened steels ap= .002" - .016" Ra >32µin	450 - 750 sfm

See full BECKER Catalog for complete selection!

TYSON TOOL

TYSON TOOL COMPANY LIMITED
75 ORMONT DRIVE, TORONTO, ONTARIO, M9L-2S3
TEL: (416) 746-3688 ~~ FAX: (416) 746-5415
INTERNET: www.tysontool.com ~~ E-MAIL: sales@tysontool.com

Available from: