

D'ANDREA® Modular Tooling System for Rough Boring, Finish Boring, Drilling, Milling, & Tapping



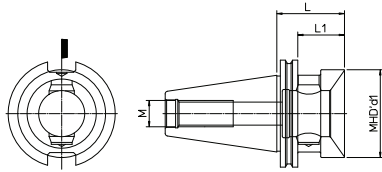
D'ANDREA®
TECHNOLOGY FOR HIGH PRECISION

Your First Choice for Rough & Finish Boring Applications from .250" to 106.3"

**Promo Pricing
Valid through 2022!**



Arbours for D'Andrea MHD Modular Tooling

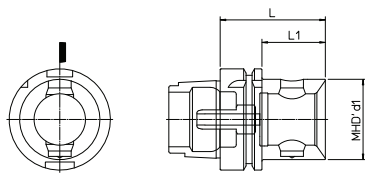


CAT V-Flange

ISO	Item Code	MHD' d1	L	L1	SPECIAL
40	CV40-M50	M50	2.59	1.89	\$186 ⁹⁵
	CV40-M50L		4.72	3.98	\$227 ⁹⁵
	CV40-M63	M63	3.94	--	\$217 ⁹⁵
50	CV50-M50	M50	1.89	1.14	\$248 ⁹⁵
	CV50-M50L		4.72	3.98	\$309 ⁹⁵
	CV50-M63	M63	2.20	1.16	\$248 ⁹⁵
	CV50-M63L		5.90	5.16	\$309 ⁹⁵
	CV50-M80	M80	2.44	1.69	\$289 ⁹⁵
	CV50-M80L		7.09	6.34	\$399 ⁹⁵

CAT V-Flange Face Contact

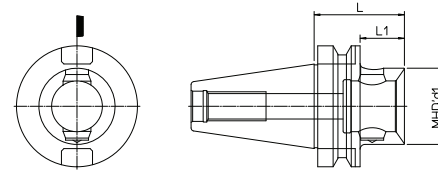
ISO	Item Code	MHD' d1	L	L1	SPECIAL
40	CV40FC-M50-2.60	M50	2.60	1.85	\$258 ⁹⁵
	CV40FC-M50-4.72		4.72	3.98	\$309 ⁹⁵
	CV40FC-M63-3.93	M63	3.93	--	\$289 ⁹⁵
50	CV50FC-M50-1.89	M50	1.89	1.14	\$331 ⁹⁵
	CV50FC-M50-4.72		4.72	3.98	\$399 ⁹⁵
	CV50FC-M63-2.20	M63	2.20	1.46	\$351 ⁹⁵
	CV50FC-M63-5.91		5.91	5.16	\$434 ⁹⁵
	CV50FC-M80-2.44	M80	2.44	1.69	\$372 ⁹⁵
	CV50FC-M80-7.09		7.09	6.34	\$465 ⁹⁵
CV50FC-M80-11.81	11.81	11.06	\$619 ⁹⁵		



HSK "A" Form

HSK-A	Item Code	MHD' d1	L	L1	SPECIAL
40	HSK-A40-M32	M32	1.89	1.10	\$309 ⁹⁵
50	HSK-A50-M50	M50	2.60	--	\$269 ⁹⁵
63	HSK-A63-M40	M40	2.36	1.34	\$269 ⁹⁵
	HSK-A63-M40L		4.72	3.70	\$331 ⁹⁵
	HSK-A63-M50	M50	2.60	1.57	\$269 ⁹⁵
HSK-A63-M50L	4.72		3.70	\$331 ⁹⁵	
80	HSK-A63-M63	M63	2.95	--	\$299 ⁹⁵
	HSK-A80-M50	M50	2.76	1.73	\$299 ⁹⁵
	HSK-A80-M63		M63	3.15	2.13
HSK-A80-M80	M80	3.39	--	\$341 ⁹⁵	
100	HSK-A100-M50	M50	2.83	1.69	\$309 ⁹⁵
	HSK-A100-M50L		4.72	3.58	\$414 ⁹⁵
	HSK-A100-M63	M63	3.23	2.09	\$341 ⁹⁵
	HSK-A100-M63L		5.91	4.76	\$434 ⁹⁵
	HSK-A100-M80	M80	3.46	2.32	\$372 ⁹⁵
	HSK-A100-M80L		7.09	5.94	\$476 ⁹⁵

Supplied with coolant tube

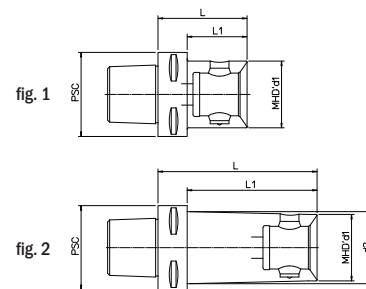


MAS 403-BT

BT	Item Code	MHD' d1	L	L1	SPECIAL
30	BT30-M32	M32	1.26	0.42	\$186 ⁹⁵
	BT30-M50	M50	2.36	--	\$186 ⁹⁵
35	BT35-M50	M50	2.36	1.42	\$289 ⁹⁵
40	BT40-M40	M40	1.77	0.71	\$186 ⁹⁵
	BT40-M50-48	M50	1.89	0.83	\$186 ⁹⁵
	BT40B-M50		1.89	0.83	\$207 ⁹⁵
	BT40-M63	M63	2.60	--	\$217 ⁹⁵
50	BT50-M50	M50	2.60	1.10	\$248 ⁹⁵
	BT50-M63		1.97	0.47	\$248 ⁹⁵
	BT50-M63L	M63	2.95	1.46	\$269 ⁹⁵
	BT50-M80		1.97	0.47	\$309 ⁹⁵
	BT50-M80L	M80	2.95	1.46	\$319 ⁹⁵

MAS 403-BT Face Contact

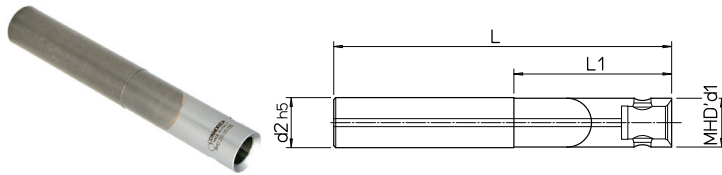
BT	Item Code	MHD' d1	L	L1	SPECIAL
40	BT40FC-M50-1.89	M50	1.89	0.83	\$258 ⁹⁵
	BT40FC-M50-4.72		4.72	3.66	\$309 ⁹⁵
	BT40FC-M63-2.60	M63	2.60	--	\$289 ⁹⁵
50	BT50FC-M50-2.60	M50	2.60	1.10	\$331 ⁹⁵
	BT50FC-M50-4.72		4.72	3.23	\$399 ⁹⁵
	BT50FC-M50-7.87	7.87	6.38	\$517 ⁹⁵	
	BT50FC-M63-2.95	M63	2.95	1.46	\$351 ⁹⁵
	BT50FC-M63-5.91		5.91	4.41	\$434 ⁹⁵
	BT50FC-M63-9.84	9.84	8.35	\$559 ⁹⁵	
	BT50FC-M80-2.95	M80	2.95	1.46	\$372 ⁹⁵
	BT50FC-M80-7.09		7.09	5.59	\$465 ⁹⁵
BT50FC-M80-11.81	11.81	10.31	\$619 ⁹⁵		



PSC Arbors

PSC Taper	Item Code	MHD d1	d2	L	L1	Kg	Fig #	SPECIAL
PSC 40	PSC40-M32-1.65	M32	--	1.65	0.87	0.3	1	\$248 ⁹⁵
	PSC40-M40-1.77	M40	--	1.77	--	0.4	1	\$248 ⁹⁵
PSC 50	PSC50-M50-2.17	M50	--	2.17	--	0.8	1	\$258 ⁹⁵
PSC 63	PSC63-M40-1.97	M40	--	1.97	1.10	0.9	1	\$269 ⁹⁵
	PSC63-M40-4.72		1.73	4.72	3.86	1.5	2	\$341 ⁹⁵
	PSC63-M50-2.17	M50	--	2.17	1.30	0.8	1	\$269 ⁹⁵
	PSC63-M50-2.64		2.64	1.77	1.1	1	\$269 ⁹⁵	
	PSC63-M50-4.72	2.13	4.72	3.86	1.9	2	\$341 ⁹⁵	
	PSC63-M63-3.03	M63	--	3.03	--	1.8	1	\$289 ⁹⁵
PSC 80	PSC80-M50-2.36	M50	--	2.36	1.18	2.0	1	\$289 ⁹⁵
	PSC80-M50-4.72		2.13	4.72	3.54	2.8	2	\$362 ⁹⁵
	PSC80-M63-2.76	M63	--	2.76	1.57	2.3	1	\$309 ⁹⁵
	PSC80-M63-5.91		2.64	5.91	4.72	4.0	2	\$392 ⁹⁵
	PSC80-M80-2.95	M80	--	2.95	--	2.6	1	\$331 ⁹⁵
	PSC80-M80-4.72		4.72	--	4.3	1	\$413 ⁹⁵	
PSC 100	PSC100-M80-3.15	M80	--	3.15	1.73	3.5	1	\$362 ⁹⁵
	PSC100-M110-4.72	M110	--	4.72	3.31	5.0	1	\$628 ⁹⁵

Arbours for D'Andrea MHD Modular Tooling



Carbide Shank MHD Straight Shank Holders

Item Code	MHD d1	d2	L	L1	kg	SPECIAL
BMD-0.625/16.110	M16	.625	4.33	1.97	.30	\$476 ⁹⁵
BMD-0.625/16.140			5.51	2.48	.40	\$579 ⁹⁵
BMD-0.625/16.170			6.69	3.15	.50	\$683 ⁹⁵
BMD-0.750/20.135	M20	.750	5.31	2.48	.60	\$652 ⁹⁵
BMD-0.750/20.170			6.69	3.15	.75	\$786 ⁹⁵
BMD-0.750/20.210			8.27	3.94	.90	\$931 ⁹⁵
BMD-1.000/25.160	M25	1.000	6.30	3.15	1.00	\$931 ⁹⁵
BMD-1.000/25.205			8.07	3.94	1.30	\$1,242 ⁹⁵
BMD-1.000/25.255			10.04	4.92	1.60	\$1,449 ⁹⁵
BMD-1.250-32.195	M32	1.250	7.68	3.94	2.10	\$1,499 ⁹⁵
BMD-1.250-32.250			9.84	4.92	2.80	\$1,863 ⁹⁵
BMD-1.250-32.315			12.40	6.30	3.50	\$2,328 ⁹⁵

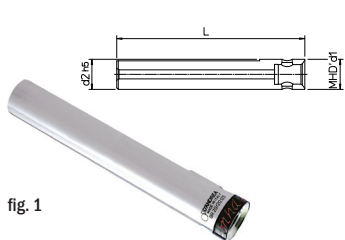


fig. 1

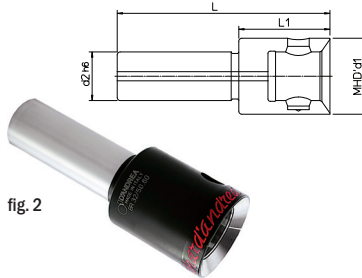
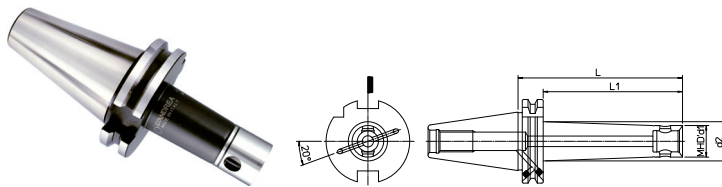


fig. 2

Straight Shank MHD Arbours

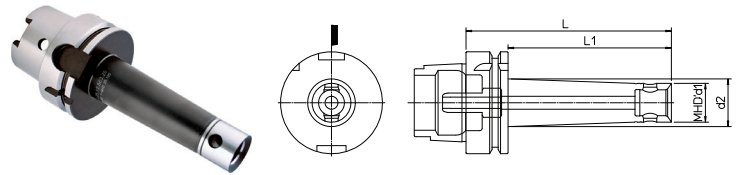
Item Code	MHD d1	L	L1	d2	kg	fig.	SPECIAL
BR-0.63-M16-3.94	M16	3.94	2.60	.625	.15	1	\$103 ⁹⁵
BR-0.75-M20-4.92	M20	4.92	3.35	.750	.25		\$124 ⁹⁵
BR-1.00-M32-3.94	M32	3.94	1.39	1.000	.70	2	\$259 ⁹⁵
BR-1.25-M50-5.51	M50	5.51	2.36	1.250	1.00		\$279 ⁹⁵



MHD - DIN 69871 Taper 40 Arbours

(Can be used in CV40 tapers with Metric Retention Knob)

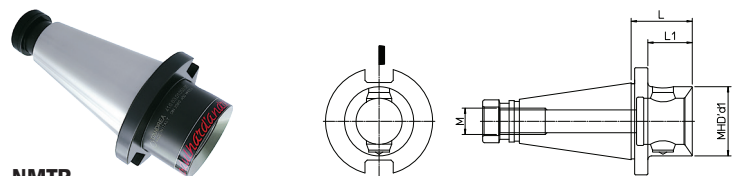
DIN	Item Code	MHD	d1	d3	L	L1	SPECIAL
40	DIN40BF-M16-1.57	M16	.63	---	1.57	.83	\$161 ⁹⁵
	DIN40BF-M16-2.48			.69	2.48	1.73	\$176 ⁹⁵
	DIN40BF-M16-3.94			.79	3.94	3.19	\$186 ⁹⁵
	DIN40BF-M20-1.97	M20	.79	---	1.97	1.22	\$165 ⁹⁵
	DIN40BF-M20-3.15			.89	3.15	2.40	\$186 ⁹⁵
	DIN40BF-M20-4.92			1.00	4.92	4.17	\$196 ⁹⁵
	DIN40BF-M25-1.97	M25	.98	---	1.97	1.22	\$165 ⁹⁵
	DIN40BF-M25-3.15			1.06	3.15	2.40	\$186 ⁹⁵
	DIN40BF-M25-4.92			1.18	4.92	4.17	\$196 ⁹⁵
	DIN40BF-M32-1.97	M32	1.26	---	1.97	1.22	\$165 ⁹⁵
	DIN40BF-M32-3.15			1.32	3.15	2.40	\$186 ⁹⁵
	DIN40BF-M32-4.92			1.44	4.92	4.17	\$196 ⁹⁵



MHD - HSK-A63F Arbours

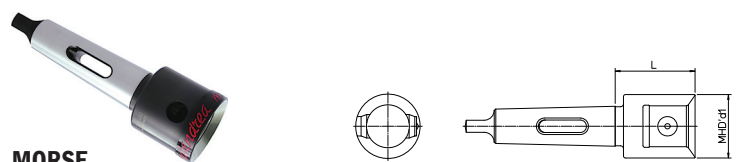
HSK-A	Item Code	MHD	d1	d2	L	L1	SPECIAL
63	HSK-A63F-M16-2.48	M16	.63	.67	2.48	1.46	\$238 ⁹⁵
	HSK-A63F-M16-3.94			.77	3.94	2.91	\$258 ⁹⁵
	HSK-A63F-M20-2.48			---	2.48	1.46	\$227 ⁹⁵
	HSK-A63F-M20-3.54	M20	.79	.89	3.54	2.52	\$248 ⁹⁵
	HSK-A63F-M20-4.92			.98	4.92	3.90	\$265 ⁹⁵
	HSK-A63F-M25-2.48			---	2.48	1.46	\$227 ⁹⁵
	HSK-A63F-M25-3.54	M25	.98	1.06	3.54	2.52	\$248 ⁹⁵
	HSK-A63F-M25-4.92			1.16	4.92	3.90	\$265 ⁹⁵
	HSK-A63F-M32-3.54			M32	1.26	1.32	3.54
	HSK-A63F-M32-4.92	1.42	4.92			3.90	\$265 ⁹⁵

Supplied with coolant tube



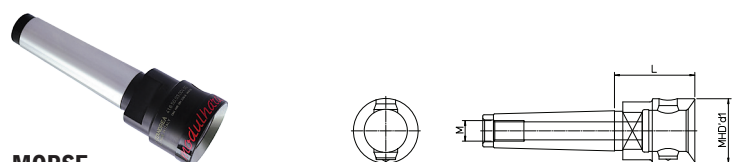
NMTB

ISO	Item Code	MHD' d1	L	L1	SPECIAL
40	NMTB40-M50	M50	1.89	1.44	\$186 ⁹⁵
	NMTB40-M63	M63	2.36	--	\$227 ⁹⁵
50	NMTB50-M50	M50	1.89	1.30	\$248 ⁹⁵
	NMTB50-M63	M63	2.20	1.61	\$248 ⁹⁵
	NMTB50-M80	M80	2.36	1.77	\$299 ⁹⁵



MORSE

MORSE	Item Code	MHD' d1	L	SPECIAL
4	MT4-M50	M50	2.56	\$269 ⁹⁵
5	MT5-M63	M63	2.56	\$310 ⁹⁵

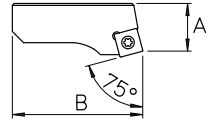
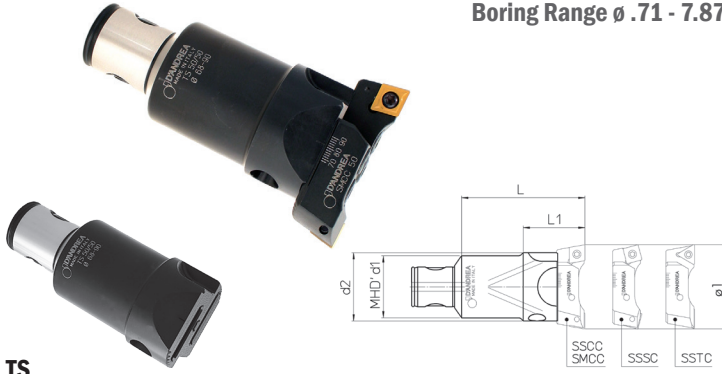


MORSE

MORSE	Item Code	MHD' d1	L	M	SPECIAL
4	MT4DIN-M50	M50	2.48	M16	\$269 ⁹⁵
4 SIP	MT4SIP-M50			M14	\$269 ⁹⁵

TS Boring Heads/Cartridges for Roughing & Semi Finishing

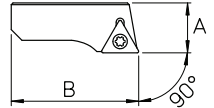
Boring Range \varnothing .71 - 7.87



SSSC Cartridges

Item Code	\varnothing^1	A	B	SPECIAL	Insert
SSSC-32	1.40 - 1.97	.59	1.26	\$103 ⁹⁵	SCMT-09T3..
SSSC-40	1.97 - 2.68	.75	1.57	\$103 ⁹⁵	
SSSC-50	2.68 - 3.54	.87	2.13	\$103 ⁹⁵	SCMT-1204..
SSSC-63	3.54 - 4.72	1.06	2.78	\$186 ⁹⁵	
SSSC-80	4.72 - 6.30	1.26	3.72	\$207 ⁹⁵	
SSSC-90	6.30 - 7.87	1.26	5.12	\$269 ⁹⁵	

Inserts sold separately



TS

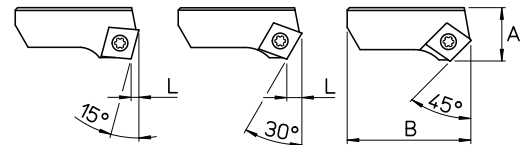
D'Andrea Double Cutter Boring Heads (Cartridges sold separately)

Item Code	d1	\varnothing	d2	L	L1	SPECIAL	Cartridge
TS-16/16	M16	.71 - .87	.63	1.34	--	\$227 ⁹⁵	S... 16
TS-20/20	M20	.87 - 1.10	.79	1.57	--	\$238 ⁹⁵	S... 20
TS-25/25	M25	1.10 - 1.50	.98	1.97	--	\$279 ⁹⁵	S... 25
TS-32/32	M32	1.40 - 1.97	1.26	2.48	--	\$310 ⁹⁵	S... 32-33
TS-40/40	M40	1.97 - 2.68	1.57	3.15	--	\$341 ⁹⁵	S... 40-41
TS-50/50	M50	2.68 - 3.54	2.17	3.94	1.97	\$372 ⁹⁵	S... 50
TS-50/63	M50	3.54 - 4.72	2.83	3.15	2.36	\$372 ⁹⁵	S... 63
TS-63/63	M63	3.54 - 4.72	2.83	4.92	2.48	\$465 ⁹⁵	S... 63
TS-80/80	M80	4.72 - 6.30 6.30 - 7.87	3.74	5.51	2.95	\$569 ⁹⁵	S... 80 S... 90

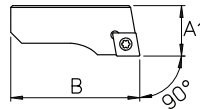
SSTC Cartridges

Item Code	\varnothing^1	A	B	SPECIAL	Insert
SSTC-63	3.54 - 4.72	1.06	2.78	\$186 ⁹⁵	TCMT-2204..
SSTC-80	4.72 - 6.30	1.26	3.72	\$207 ⁹⁵	
SSTC-90	6.30 - 7.87	1.26	5.12	\$269 ⁹⁵	

Inserts sold separately



SMCC Boring Cartridges for TS Roughing Heads



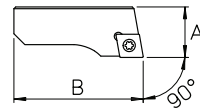
Item Code	\varnothing^1	A	B	SPECIAL	Insert
SMCC-25	1.10 - 1.50	.48	.91	\$93 ⁹⁵	CCMT-0602..
SMCC-32	1.40 - 1.97	.58	1.26	\$103 ⁹⁵	
SMCC-33	1.40 - 1.97	.58	1.26	\$103 ⁹⁵	
SMCC-40	1.97 - 2.68	.74	1.57	\$103 ⁹⁵	CCMT-09T3..
SMCC-41	1.97 - 2.68	.74	1.57	\$103 ⁹⁵	CCMT-1204..
SMCC-50	2.68 - 3.54	.85	2.13	\$103 ⁹⁵	
SMCC-63	3.54 - 4.72	1.05	2.78	\$186 ⁹⁵	
SMCC-80	4.72 - 6.30	1.25	3.72	\$207 ⁹⁵	
SMCC-90	6.30 - 7.87	1.25	5.12	\$269 ⁹⁵	CCMT-1204

Inserts sold separately

SSSM Chamfer Cartridges for TS Roughing Heads

Item Code	Range	Angle	A	B	SPECIAL	Insert
SSSM-25-15		15°			\$93 ⁹⁵	CCMT-0602
SSSM-25-30	1.02 - 1.50	30°	.49	.91	\$93 ⁹⁵	
SSSM-25-45		45°			\$93 ⁹⁵	
SSSM-32-15		15°			\$103 ⁹⁵	CCMT-0602
SSSM-32-30	1.36 - 1.93	30°	.59	1.22	\$103 ⁹⁵	
SSSM-32-45		45°			\$103 ⁹⁵	
SSSM-40-15		15°			\$103 ⁹⁵	CCMT-09T3
SSSM-40-30	1.83 - 2.60	30°	.75	1.54	\$103 ⁹⁵	
SSSM-40-45		45°			\$103 ⁹⁵	
SSSM-50-15		15°			\$103 ⁹⁵	CCMT-1204
SSSM-50-30	2.56 - 3.46	30°	.87	2.09	\$103 ⁹⁵	
SSSM-50-45		45°			\$103 ⁹⁵	

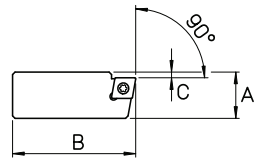
Inserts sold separately



SSCC Boring Cartridges for TS Roughing Heads

Item Code	\varnothing^1	A	B	SPECIAL	Insert
SSCC-16	.71 - .87	.31	.59	\$86 ⁹⁵	CCMT-0602..
SSCC-20	.87 - 1.10	.37	.75	\$91 ⁹⁵	
SSCC-25	1.10 - 1.50	.49	.91	\$93 ⁹⁵	
SSCC-32	1.40 - 1.97	.59	1.26	\$103 ⁹⁵	CCMT-09T3..
SSCC-33	1.40 - 1.97	.59	1.26	\$103 ⁹⁵	
SSCC-40	1.97 - 2.68	.75	1.57	\$103 ⁹⁵	CCMT-1204..
SSCC-41	1.97 - 2.68	.75	1.57	\$103 ⁹⁵	
SSCC-50	2.68 - 3.54	.87	2.13	\$103 ⁹⁵	
SSCC-63	3.54 - 4.72	1.06	2.78	\$186 ⁹⁵	
SSCC-80	4.72 - 6.30	1.26	3.72	\$207 ⁹⁵	CCMT-1204
SSCC-90	6.03 - 7.87	1.26	5.12	\$269 ⁹⁵	

Inserts sold separately



SSQC BackBore Cartridges for TS Roughing Heads

Item Code	Range	A	B	C	SPECIAL	Insert
SSQC-16	.79 - .94	.08	.63	.39	\$113 ⁹⁵	CCMT-0602
SSQC-20	.93 - 1.18	.06	.77	.43	\$124 ⁹⁵	
SSQC-25	1.16 - 1.57	.10	.94	.57	\$124 ⁹⁵	
SSQC-33	1.54 - 2.05	.12	1.26	.67	\$129 ⁹⁵	CCMT-09T3
SSQC-41	2.01 - 2.76	.14	1.65	.83	\$134 ⁹⁵	CCMT-1204
SSQC-50	2.72 - 3.62	.14	2.24	.96	\$144 ⁹⁵	
SSQC-63	3.58 - 4.80	.14	2.99	1.12	\$238 ⁹⁵	
SSQC-80	4.76 - 6.38	.14	3.98	1.24	\$269 ⁹⁵	
SSQC-90	6.34 - 7.95	.14	4.80	1.24	\$351 ⁹⁵	CCMT-1204

Inserts sold separately

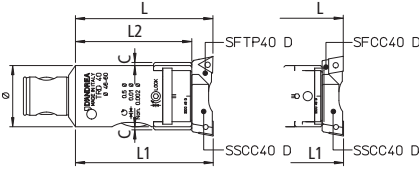
TRD & TRC Heads for Rough & Semi Finish to Fine Finishing

TRD Double Cutters for Roughing & Precision Finishing

The double cutter TRD heads allow both roughing and high precision finishing thanks to their rigidity and the sensitivity of the sliding mechanism which can achieve a radial adjustment of 5 micron. These heads can be adjusted directly on the machine tool and easily read on the Vernier scale.



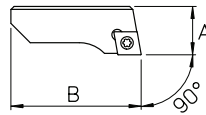
Boring Range ϕ 1.10 - 4.72



TRD

D'Andrea Precision Boring Heads for Roughing and Finishing

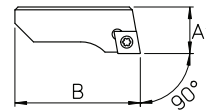
Item Code	MHD	Range	L	L1	L2	C	SPECIAL
TRD-25/25	M25	1.10 - 1.42	2.21	2.22	1.83	.02	\$683.95
TRD-32/32	M32	1.42 - 1.81	2.79	2.80	2.34	.02	\$724.95
TRD-40/40	M40	1.81 - 2.36	3.53	3.54	2.99	.04	\$755.95
TRD-50/50	M50	2.36 - 2.95	3.42	3.43	2.68	.04	\$869.95
TRD-63/63	M63	2.95 - 3.74	4.28	4.29	3.33	.08	\$931.95
TRD-80/80	M80	3.74 - 4.72	5.11	5.12	3.96	.08	\$1,035.95



Roughing Cartridges for TRD Boring Heads

Item Code	Range	A	B	SPECIAL	Insert
SSCC-25-D	1.10 - 1.42	.394	.94	\$93.95	CCMT-0602_
SSCC-32-D	1.42 - 1.81	.453	1.18	\$103.95	
SSCC-40-D	1.81 - 2.36	.551	1.57	\$103.95	CCMT-09T3_
SSCC-50-D	2.36 - 2.95	.748	2.13	\$103.95	
SSCC-63-D	2.95 - 3.74	.965	2.68	\$186.95	
SSCC-80-D	3.74 - 4.72	1.161	3.43	\$207.95	

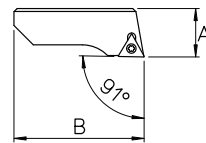
Inserts sold separately



Finishing Cartridges for TRD Boring Heads

Item Code	Range	A	B	SPECIAL	Insert
SFCC-25-D	1.10 - 1.42	.386	.94	\$93.95	CCGT-0602_
SFCC-32-D	1.42 - 1.81	.445	1.18	\$103.95	
SFCC-40-D	1.81 - 2.36	.543	1.57	\$103.95	CCGT-09T3_
SFCC-50-D	2.36 - 2.95	.740	2.13	\$103.95	
SFCC-63-D	2.95 - 3.74	.957	2.68	\$186.95	
SFCC-80-D	3.74 - 4.72	1.154	3.43	\$207.95	

Inserts sold separately



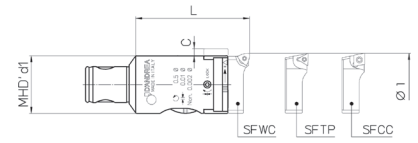
Finishing Cartridges for TRD Boring Heads

Item Code	Range	A	B	SPECIAL	Insert
SFTP-25-D	1.10 - 1.42	.386	.94	\$93.95	TPGX-0902_
SFTP-32-D	1.42 - 1.81	.445	1.18	\$103.95	
SFTP-40-D	1.81 - 2.36	.543	1.57	\$103.95	TPGX-1103_
SFTP-50-D	2.36 - 2.95	.740	2.13	\$103.95	
SFTP-63-D	2.95 - 3.74	.957	2.68	\$186.95	
SFTP-80-D	3.74 - 4.72	1.154	3.43	\$207.95	

Inserts sold separately



Boring Range ϕ .10 - 7.87



TRC

D'Andrea Precision Boring Heads for Semi-Finishing & Finishing (Cartridges / Accessories sold separately)

Item Code	MHD	Range	L	C	SPECIAL	Accessories
TRC-14/14	M14	.57 - .71	1.18	.04	\$496.95	SFCW 14
TRC-16/16	M16	.71 - .94	1.34	.06	\$517.95	SF.. 16
TRC-20/20	M20	.87 - 1.18	1.57	.10	\$548.95	SF.. 20
TRC-25/25	M25	1.10 - 1.57	1.97	.12	\$569.95	SF.. 25
TRC-32/32	M32	1.38 - 2.09	2.48	.16	\$610.95	SF.. 32
TRC-40/40	M40	1.89 - 2.60	3.15	.20	\$621.95	SF.. 40
TRC-50/50	M50	.098 - 1.18	TBD	.20	\$683.95	B1 / B3 / B5 / B8
		1.10 - 2.13	TBD			P-25.63 / SF..25 / SF..32
		2.13 - 3.39	3.15			SF..50
		3.03 - 4.37	3.70			PS-31.24 / SF..50
TRC-63/63	M63	2.83 - 4.33	3.48	.39	\$786.95	SF..50
		3.38 - 4.92	4.33			PS-31.28 / SF..50
TRC-80/80	M80	3.46 - 5.20	4.09	.47	\$828.95	SF..50
		4.52 - 6.30	4.94			PS-32.28 / SF..50
		6.10 - 7.87	4.94			PS-33.28 / SF..50

CCGT Inserts

Item Code	d	s	r	Uncoated Carbide	DC100	DC100T
CCGT-060200L.10	.250	.094	--	•	•	•
CCGT-060202L			.008	•	•	•
CCGT-060204L			.016	•	•	•
CCGT-09T302L	.375	.157	.008	•	•	•
CCGT-09T304L			.016	•	•	•

CCMT Inserts

Item Code	d	s	r	Uncoated Carbide	DP300	DK100	DP100R
CCMT-060202	.250	.094	.008	•			•
CCMT-060204			.016	•			•
CCMT-09T304	.375	.157	.016	•			•
CCMT-09T308			.031	•			•
CCMT-120404			.016	•			•
CCMT-120408	.500	.187	.031	•			•

TPGX Inserts

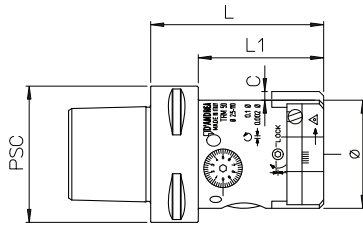
Item Code	d	s	r	Uncoated Carbide	DC100	DC100T
TPGX-090200L.10	.219	.094	--	•	•	•
TPGX-090202L			.008	•	•	•
TPGX-090204L			.016	•	•	•
TPGX-110300L	.250	.157	--	•	•	•
TPGX-110302L			.008	•	•	•
TPGX-110304L			.016	•	•	•

WCGT Inserts

Item Code	d	s	r	Uncoated Carbide	DC100	DC100T
WCGT-020102L	.157	.063	.008	•	•	•
WCGT-020104L			.016	•	•	•

TRM Heads with PSC Shanks for Fine Finishing

TRM Heads for finish & super-finishing boring operations, .0001" (0.002mm) ϕ setting accuracy



D'Andrea PSC (Polygon) shank tooling is manufactured to ISO 26623-2 and is completely interchangeable with the Sandvik CAPTO* tooling system. Using these PSC holders then permits you to use the complete D'Andrea Modular MHD boring system in your machine tools.

The shank crossovers are as listed below:

TRM-50/PSC40 Head Range .10" to 4.25" **\$999.95**

Item Code	PSC Size	ϕ	L	L1	C	Accessories*
TRM-50/PSC40	PSC40	.10 - .24	TBD	2.36	.16	D08-16 B1
		.24 - 1.18	TBD			B3 / B5 / B8
		1.10 - 2.20	5.69			P25.63 SF..25 / SF32
		2.13 - 3.31	3.90			BM10 SF..50
		3.15 - 4.25	4.45			PS-31.24 SF..50
		3.62 - 4.25				PS-31.24 / CW-32 SF..50

CAPTO	D'Andrea PSC
C4	PSC40
C5	PSC50
C6	PSC63
C8	PSC80
C10	PSC100

* Sandvik & CAPTO are registered trademarks of Sandvik Intellectual Property AB

TRM-50/PSC50 Head Range .10" to 4.25" **\$999.95**

Item Code	PSC Size	ϕ	L	L1	C	Accessories*
TRM-50/PSC50	PSC50	.10 - .24	TBD	2.36	.16	D08-16 B1
		.24 - 1.18	TBD			B3 / B5 / B8
		1.10 - 2.20	5.69			P25.63 SF..25 / SF32
		2.13 - 3.31	3.90			BM10 SF..50
		3.15 - 4.25	4.45			PS-31.24 SF..50
		3.62 - 4.25				PS-31.24 / CW-32 SF..50

TRM-50/PSC63 Head Range .10" to 4.25" **\$999.95**

Item Code	PSC Size	ϕ	L	L1	C	Accessories*
TRM-50/PSC63	PSC63	.10 - .24	TBD	2.28	.16	D08-16 B1
		.24 - 1.18	TBD			B3 / B5 / B8
		1.10 - 2.20	5.69			P25.63 SF..25 / SF32
		2.13 - 3.31	3.90			BM10 SF..50
		3.15 - 4.25	4.45			PS-31.24 SF..50
		3.62 - 4.25				PS-31.24 / CW-32 SF..50

TRM-63/PSC63 Head Range .10" to 4.92" **\$1,099.95**

Item Code	PSC Size	ϕ	L	L1	C	Accessories*
TRM-63/PSC63	PSC63	.10 - .24	TBD	---	.20	P-20.30 / D08.16 B1
		.24 - 1.18	TBD			B3 / B5 / B8
		1.18 - 3.03	5.00			P-02.30 SF..25 / SF32
			6.18			P-03.30 SF..25 / SF32
		3.03 - 4.92	4.27			PS-11.30 SF..50

TRM-80/PSC80 Head Range .10" to 8.66" **\$1,199.95**

Item Code	PSC Size	ϕ	L	C	Accessories*
TRM-80/PSC80	PSC80	.10 - .24	TBD	.20	P-20.30 / D08.16 B1
		.24 - 1.18	TBD		PS-32.28 B3 / B5 / B8
		1.18 - 3.74	5.59		P-02.30 SF..25 / SF32
			6.77		P-03.30 SF..25 / SF32
			8.54		P-04.30 SF..25 / SF32
		3.74 - 5.51	4.86		PS-12.30 SF..50
			5.51 - 8.66		

Complete offerings of PSC Tools available:

- PSC Arbours
- PSC Extensions
- PSC Reducers
- PSC Blanks
- 28Rc & 42Rc
- PSC Turning Tools
- PSC ShrinkFit (Metric Only)
- PSC Precision Boring Heads

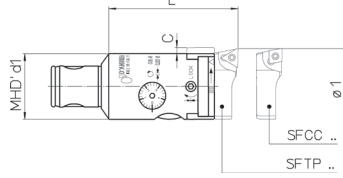


Note! Accessories listed above are not included with head and must be ordered separately

TRM Heads for Fine Finishing

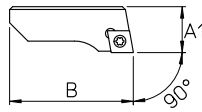
TRM Heads for finish & super-finishing boring operations, .0001" (0.002mm) ϕ setting accuracy

Boring Range ϕ .10 - 4.33



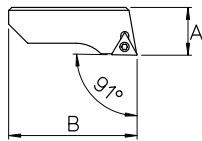
TRM
D'Andrea Precision Boring Heads for Fine Finishing
(Cartridges / Accessories sold separately)

Item Code	MHD	Range	L	C	SPECIAL	Accessories
TRM-16/16	M16	.71 - .91	1.34	.04	\$669.60	SF.. 16
TRM-20/20	M20	.87 - 1.14	1.57	.08	\$711.45	SF.. 20
TRM-25/25	M25	1.10 - 1.50	1.97	.08	\$753.30	SF.. 25
TRM-32/32	M32	1.40 - 1.97	2.48	.12	\$795.15	SF.. 32
TRM-40/40	M40	1.89 - 2.48	3.15	.16	\$837.00	SF.. 40
TRM-50/50	M50	.098 - 1.18	TBD	.20	\$962.55	B1 / B3 / B5 / B8
		1.10 - 2.13	TBD			P-25.63 / SF..25 / SF..32
		2.13 - 3.39	3.15			SF..50
		3.03 - 4.33	3.70			PS-31.24 / SF..50



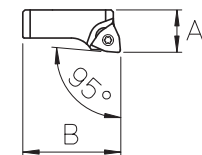
SFCC Cartridges

Item Code	Range	A	B	SPECIAL	Insert
SFCC-16	.71 - .94	.31	.67	\$89.28	CCGT-0602..
SFCC-20	.87 - 1.18	.33	.83	\$96.26	CCGT-0602..
SFCC-25	1.10 - 1.57	.39	1.04	\$99.05	CCGT-0602..
SFCC-32	1.38 - 2.09	.45	1.36	\$103.23	CCGT-0602..
SFCC-40	1.89 - 2.60	.55	1.73	\$107.42	CCGT-09T3..
SFCC-50	2.13 - 19.70	.75	2.05	\$110.21	CCGT-09T3..



SFTP Cartridges

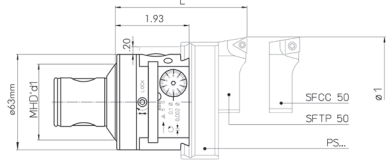
Item Code	Range	A	B	SPECIAL	Insert
SFTP-25	1.10 - 1.57	.39	1.04	\$99.05	TPGX-0902..
SFTP-32	1.38 - 2.09	.45	1.36	\$103.23	TPGX-0902..
SFTP-40	1.89 - 2.60	.55	1.73	\$107.42	TPGX-1103..
SFTP-50	2.13 - 19.70	.75	2.05	\$110.21	TPGX-1103..



SFWC Cartridges

Item Code	Range	A	B	SPECIAL	Insert
SFWC-14	.57 - .71	.31	.55	\$96.26	WCGT-0201..

Boring Range ϕ .24 - 19.70



TRM
D'Andrea Precision Boring Heads for Fine Finishing
(Cartridges / Slides / Bars sold separately)

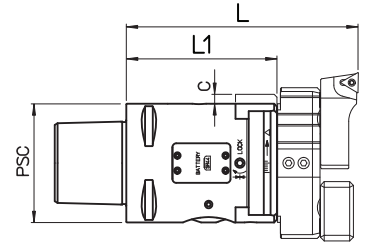
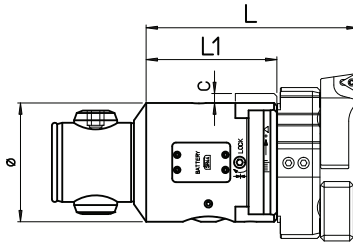
Item Code	MHD	Range	L	L1	SPECIAL	Slide / Ext	Cart / Bar
TRM-50/63	M50	.24 - 1.18	--	--	\$1,060.95	--	B3 / B5 / B8
		1.18 - 2.60	1.97	--		P-02.30	SF..25
			3.15	--		P-03.30	
		1.40 - 3.03	4.92	--		P-04.30	SF..32
			1.97	--		P-02.30	
		3.00 - 3.90	3.15	--		P-03.30	SF..50
3.70 - 4.90	4.92	--	P-04.30				
TRM-63/63	M63	.24 - 1.18	--	--	\$1,060.95	--	B3 / B5 / B8
		1.18 - 2.60	1.97	--		P-02.30	SF..25
			3.15	--		P-03.30	
		1.40 - 3.03	4.92	--		P-04.30	SF..32
			1.97	--		P-02.30	
		3.00 - 5.90	3.15	--		P-03.30	SF..50
3.70 - 4.90	4.92	--	P-04.30				
TRM-50/80	M50	.24 - 1.18	--	--	\$1,139.95	--	B3 / B5 / B8
		1.18 - 3.27	1.97	--		P-02.30	SF..25
			3.15	--		P-03.30	
		1.40 - 3.74	4.92	--		P-04.30	SF..32
			1.97	--		P-02.30	
		3.70 - 5.50	3.15	--		P-03.30	SF..50
5.50 - 6.30	4.92	--	P-04.30				
TRM-80/80	M80	.24 - 1.18	--	--	\$1,139.95	--	B3 / B5 / B8
		1.18 - 3.27	1.97	--		P-02.30	SF..25
			3.15	--		P-03.30	
		1.40 - 3.74	4.92	--		P-04.30	SF..32
			1.97	--		P-02.30	
		3.70 - 5.50	3.15	--		P-03.30	SF..50
5.50 - 6.30	4.92	--	P-04.30				
TRM-80/125	M80	1.42 - 4.92	3.15	--	\$1,899.95	P-02.40	SF..32
			4.92	--		P-03.40	
		1.97 - 5.43	7.87	--		P-04.40	SF..40
			3.15	--		P-02.40	
		5.30 - 8.30	4.92	--		P-03.40	SF..50
			7.87	--		P-04.40	
8.10 - 12.20	4.49	2.48	PS 11.40	SF..50			
12.00 - 16.10	PS 12.40		PS 13.40				
15.90 - 19.70	PS 14.40		PS 14.40				

TR-E Digital Heads for Precision Finishing

- Digital read-out / Inch or Metric
- Range from .10" to 7.87" (2.5 to 200 mm)
- High precision through direct measurement of Slide movement
- Zero Backlash Compensation
- Single button operation for "On", "Reset" and to change from Inch to Metric
- Display resolution .0001" (.002 mm)
- Coolant resistant to IP69K
- Available with MHD or PSC Coupling



TR-E Heads for finish & super-finishing boring operations, radial adjustment of 0.0001" on display.



TR-E D'Andrea Precision Boring Heads for Fine Finishing

MHD

Item Code	MHD Size	Range	L	L1	C	SPECIAL	Accessories
TR-E50 / 50-69K	MHD 50	.10 - 1.18	TBD			\$1,699 ⁹⁵	B1 / B3 / B5 / B8
		1.10 - 2.20	4.88				P-25.63 SF..25 / SF..32
		2.13 - 3.39	3.15	2.40	.20		BM10 SF..50
		3.15 - 4.33		3.70			PS-31.24 SF..50
		3.62 - 4.33					PS-31.24 / CW-32 SF..50
TR-E63 / 63-69K	MHD 63	.24 - 1.18	TBD			\$1,859 ⁹⁵	PS-31.28 B3 / B5 / B8
		1.10 - 2.20	6.06				PS-31.28 / P-25.63 SF..25 / SF..32
		1.57 - 2.20	6.22	2.74	.20		P-22.28 SF..32
		2.13 - 2.91	6.50				P-22.28 SF..50
		2.83 - 4.06	3.48				SF..50
		3.39 - 4.92	4.33				PS-31.28 / CW-32 SF..50
TR-E80 / 80-69K	MHD 80	.24 - 1.18	TBD			\$1,999 ⁹⁵	PS-32.28 B3 / B5 / B8
		1.10 - 2.20	6.06				PS-32.28 / P-25.63 SF..25 / SF..32
		1.57 - 2.20	6.81				P-22.28 SF..32
		2.13 - 3.39	7.09	3.33	.20		P-22.28 SF..50
		3.35 - 4.57	4.09				SF..50
		4.53 - 6.30		4.94			PS-32.28 / CW-32 SF..50
		6.10 - 7.87					PS-33.28 / CW-32 SF..50

Note! Accessories listed above are not included with head and must be ordered separately

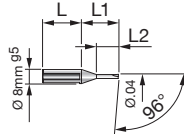
TR-E D'Andrea Precision Boring Heads for Fine Finishing

PSC

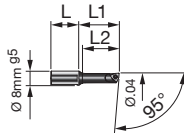
Item Code	PSC Size	Range	L	L1	C	SPECIAL	Accessories
TR-E50 / PSC50-69K	PSC 50	.10 - 1.18	TBD			\$1,799 ⁹⁵	B1 / B3 / B5 / B8
		1.10 - 2.20	5.63				P-25.63 SF..25 / SF..32
		2.13 - 3.39	3.90	3.15	.20		BM10 SF..50
		3.15 - 4.33		4.45			PS-31.24 SF..50
		3.62 - 4.33					PS-31.24 / CW-32 SF..50
TR-E63 / PSC63-69K	PSC 63	.24 - 1.18	TBD			\$1,959 ⁹⁵	PS-31.28 B3 / B5 / B8
		1.10 - 2.20	6.48				PS-31.28 / P-25.63 SF..25 / SF..32
		1.57 - 2.20	6.63	3.15	.20		P-22.28 SF..32
		2.13 - 2.91	6.91				P-22.28 SF..50
		2.83 - 4.06	3.90				SF..50
		3.39 - 4.92	4.74				PS-31.28 / CW-32 SF..50
TR-E80 / PSC80-69K	PSC 80	.24 - 1.18	TBD			\$2,099 ⁹⁵	PS-32.28 B3 / B5 / B8
		1.10 - 2.20	7.34				PS-32.28 / P-25.63 SF..25 / SF..32
		1.57 - 2.20	7.50				P-22.28 SF..32
		2.13 - 3.39	7.78	4.01	.20		P-22.28 SF..50
		3.35 - 4.57	4.78				SF..50
		4.53 - 6.30		5.63			PS-32.28 / CW-32 SF..50
		6.10 - 7.87					PS-33.28 / CW-32 SF..50

Note! Accessories listed above are not included with head and must be ordered separately

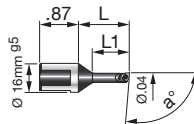
Boring Bars and Accessories



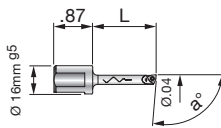
Item Code	Ø ¹	L	L1	L2	SPECIAL
B1.02	.10 - .16	.87	.83	.49	\$103 ^{.95}
B1.04	.16 - .24	.94	.94	--	\$103 ^{.95}



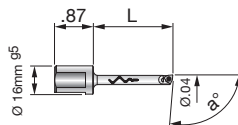
Item Code	Ø ¹	L	L1	L2	SPECIAL	Insert	Insert
B1.06	.24 - .31	.63	.91	.83	\$93 ^{.95}	WCGT-0201..	--
B1.08	.31 - .39	.63	1.10	--	\$93 ^{.95}		
B1.10	.39 - .47	.63	1.42	--	\$93 ^{.95}	--	TPGX-0902



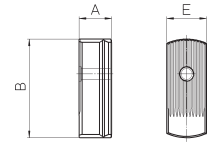
Item Code	Ø ¹	L	L1	a°	SPECIAL	Insert	Insert
B3.06	.24 - .31	1.14	.83	95°	\$98 ^{.95}	WCGT-0201..	--
B3.08	.31 - .39	1.42	1.10	95°	\$103 ^{.95}		
B3.10	.39 - .47	1.69	1.38	93°	\$113 ^{.95}	--	TPGX-0902..
B3.11	.43 - .51	1.89	1.57	95°	\$113 ^{.95}		
B3.12	.47 - .55	1.89	1.65	95°	\$119 ^{.95}		
B3.14	.55 - .63	2.05	1.97	95°	\$124 ^{.95}		
B3.16	.63 - .71	2.28	1.97	95°	\$126 ^{.95}		
B3.18	.71 - .87	2.48	--	95°	\$134 ^{.95}		
B3.22	.87 - 1.18	2.68	--	95°	\$138 ^{.95}		



Item Code	Ø ¹	L	a°	SPECIAL	Insert	Insert
B5.06	.24 - .31	1.42	95°	\$248 ^{.95}	WCGT-0201..	--
B5.08	.31 - .39	1.89	95°	\$279 ^{.95}		
B5.10	.39 - .47	2.36	93°	\$310 ^{.95}	--	TPGX-0902..
B5.12	.47 - .55	2.83	95°	\$341 ^{.95}		
B5.14	.55 - .63	3.31	95°	\$367 ^{.95}		
B5.16	.63 - .71	3.78	95°	\$414 ^{.95}		

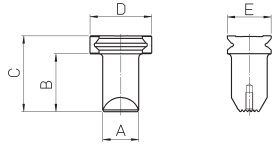


Item Code	Ø ¹	L	a°	SPECIAL	Insert	Insert
B8.06	.24 - .31	1.77	95°	\$445 ^{.95}	WCGT-0201..	--
B8.08	.31 - .39	2.36	95°	\$455 ^{.95}		
B8.10	.39 - .47	2.95	93°	\$496 ^{.95}	--	TPGX-0902..
B8.12	.47 - .55	3.54	95°	\$538 ^{.95}		
B8.14	.55 - .63	4.13	95°	\$599 ^{.95}		
B8.16	.63 - .71	4.72	95°	\$662 ^{.95}		



Tool Slide

Item Code	A	B	E	SPECIAL
PS-11.30	.98	2.95	1.20	\$129 ^{.95}
PS-12.30	.98	3.66	1.20	\$144 ^{.95}
PS-13.30	.98	5.31	1.20	\$207 ^{.95}
PS-11.40	1.57	5.24	1.57	\$207 ^{.95}
PS-12.40	1.57	7.87	1.57	\$238 ^{.95}
PS-13.40	1.57	11.81	1.57	\$310 ^{.95}
PS-14.40	1.57	15.75	1.57	\$465 ^{.95}

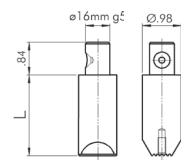


Toolholder Extension

Item Code	A	B	C	D	E	SPECIAL
P-02.30	.98	1.57	2.07	1.69	1.20	\$103 ^{.95}
P-03.30	.98	2.76	3.25	1.69	1.20	\$116 ^{.95}
P-04.30	1.06	4.53	5.02	1.69	1.20	\$165 ^{.95}
P-02.40	1.26	2.72	3.39	2.20	1.57	\$144 ^{.95}
P-03.40	1.26	4.49	5.16	2.20	1.57	\$155 ^{.95}
P-04.40	1.50	7.44	8.11	2.20	1.57	\$227 ^{.95}

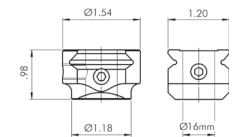
Toolholder Extension

Item Code	L	SPECIAL
P-25.63	2.09	\$93 ^{.95}
P-25.105	3.74	\$134 ^{.95}



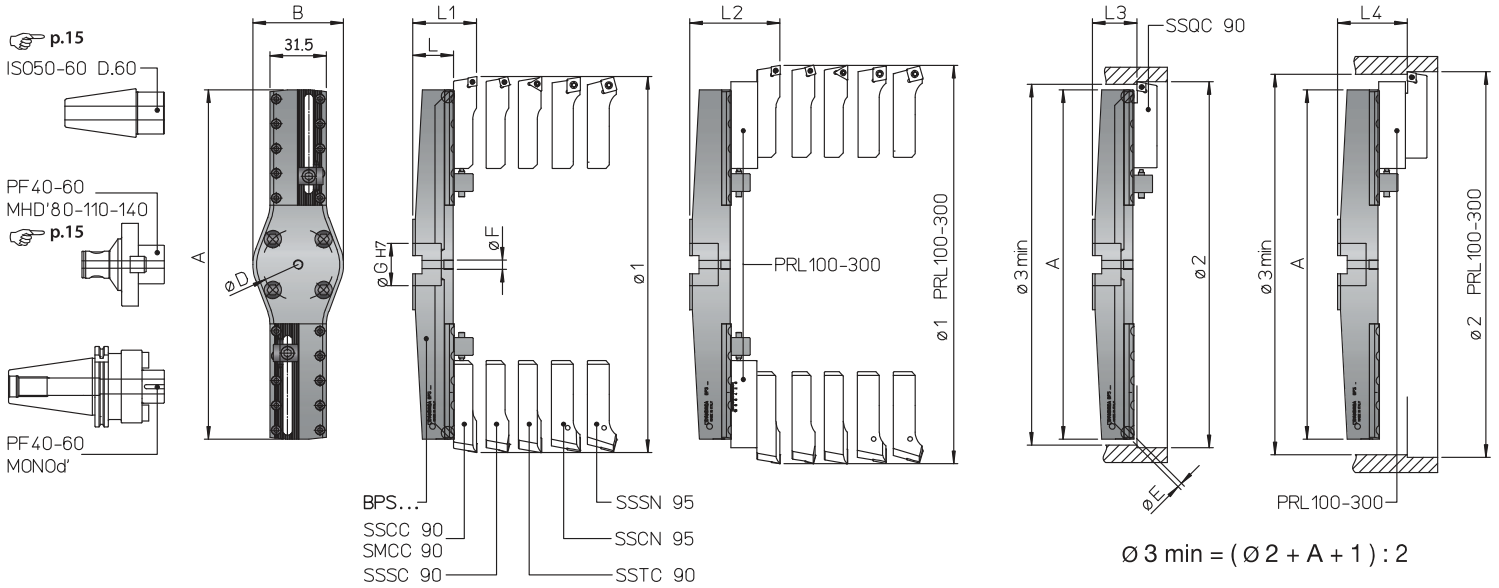
Boring Bar Holder

Item Code	SPECIAL
P-20.30	\$103 ^{.95}



BPS 200-800 Double-Bit Boring CrossBars

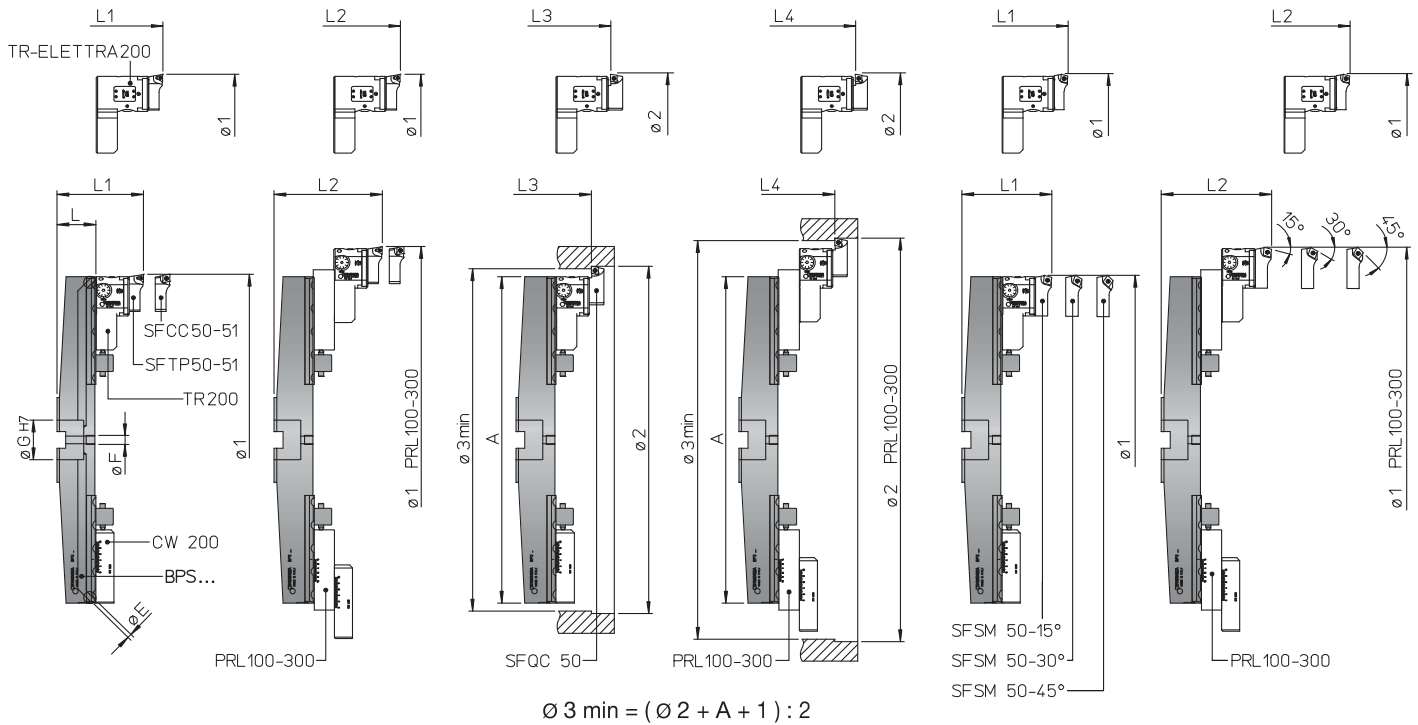
The BPS double-bit crossbars pictured on the following 2 pages cover a diameter range of 7.87" to 47.32" for roughing or finishing operations. D'Andrea also offers additional bridges that cover the range from 39.37" to 106.30" (BPS-1000, BPS-1150 & BPS-1600). For the cartridges please see page 12.



	BPS-200	BPS-300	BPS-400	BPS-500	BPS-600	BPS-700	BPS-800
SPECIAL	\$1,424⁹⁵	\$1,579⁹⁵	\$1,879⁹⁵	\$2,479⁹⁵	\$2,589⁹⁵	\$2,799⁹⁵	\$3,195⁹⁵
A	7.64	11.34	15.52	19.45	23.39	27.32	31.26
B	---			5.04			
ø D	(4 x M12) 2.63			(4 x M16) 4.00			
ø E	2.5 mm (.0984)			---			
ø F	---			1/4 GAS			
ø G	40 mm (1.575)			60 mm (2.362)			
ø 1	7.87 - 11.81	11.81 - 15.75	15.75 - 19.69	19.69 - 23.62	23.62 - 27.56	27.56 - 31.50	31.50 - 35.43
ø 1 PRL-100	11.81 - 15.75	15.75 - 19.69	19.69 - 23.62	23.62 - 27.56	27.56 - 31.50	31.50 - 35.43	35.43 - 39.37
SPECIAL	PRL-100 \$529⁹⁵			PRL-100 \$529⁹⁵			
ø 1 PRL-300	15.75 - 23.62	19.69 - 27.56	23.62 - 31.50	27.56 - 35.43	31.50 - 39.37	35.43 - 43.31	39.37 - 47.24
SPECIAL	PRL-300 \$859⁹⁵			PRL-300 \$859⁹⁵			
ø 2	7.95 - 11.89	11.89 - 15.83	15.83 - 19.76	19.76 - 23.70	23.70 - 27.64	27.64 - 31.57	31.57 - 35.51
ø 2 PRL-100	11.89 - 15.83	15.83 - 19.76	19.76 - 23.70	23.70 - 27.64	27.64 - 31.57	31.57 - 35.51	35.51 - 39.45
ø 2 PRL-300	15.83 - 23.70	19.76 - 27.64	23.70 - 31.57	27.61 - 35.51	31.57 - 39.45	35.51 - 43.39	39.45 - 47.32
L	2.13		2.40	2.72	2.80	2.91	3.15
L1 S...90	3.39		3.66	3.98	4.06	4.17	4.41
L1 S...95	3.70		3.98	4.29	4.37	4.49	4.72
L2 PRL-100 S...90	4.57		4.84	5.16	5.24	5.35	5.59
L2 PRL-300 S...90	4.96		5.24	5.55	5.63	5.75	5.98
L2 PRL-100 S...95	4.88		5.16	5.47	5.55	5.67	5.91
L2 PRL-300 S...95	5.28		5.55	5.87	5.95	6.06	6.40
L3 SSQC-90	2.22		2.50	2.82	2.89	3.01	3.25
L4 PRL-100 SSQC-90	3.41		3.68	3.99	4.08	4.19	4.43
L4 PRL-300 SSQC-90	3.80		4.08	4.39	4.49	4.59	4.82

BPS 200-800 Double-Bit Boring CrossBars

The BPS double - bit crossbars pictured on this page are designed to use D'Andrea's Precision boring heads TR-200 or the Digital Heads TR-E200-69K. For boring heads and cartridges please see page 12.



	BPS-200	BPS-300	BPS-400	BPS-500	BPS-600	BPS-700	BPS-800					
SPECIAL	\$1,424⁹⁵	\$1,579⁹⁵	\$1,879⁹⁵	\$2,479⁹⁵	\$2,589⁹⁵	\$2,799⁹⁵	\$3,195⁹⁵					
A	7.64	11.34	15.51	19.45	23.39	27.32	31.26					
B	---			5.04								
Ø D	(4 x M12) 2.63				(4 x M16) 4.00							
Ø E	2.5 mm (.0984)		---									
Ø F	---		1/4 GAS									
Ø G	40 mm (1.575)				60 mm (2.362)							
Ø 1	7.87 - 11.81	11.81 - 15.75	15.75 - 19.69	19.69 - 23.62	23.62 - 27.56	27.56 - 31.50	31.50 - 35.43					
Ø 1 PRL-100	11.81 - 15.75	15.75 - 19.69	19.69 - 23.62	23.62 - 27.56	27.56 - 31.50	31.50 - 35.43	35.43 - 39.37					
SPECIAL	PRL-100 \$529⁹⁵			PRL-100 \$529⁹⁵								
Ø 1 PRL-300	15.75 - 23.62	19.69 - 27.56	23.62 - 31.50	27.56 - 35.43	31.50 - 39.37	35.43 - 43.31	39.37 - 47.24					
SPECIAL	PRL-300 \$859⁹⁵			PRL-300 \$859⁹⁵								
Ø 2	7.95 - 11.89	11.89 - 15.83	15.83 - 19.76	19.76 - 23.70	23.70 - 27.64	27.64 - 31.57	31.57 - 35.51					
Ø 2 PRL-100	11.89 - 15.83	15.83 - 19.76	19.76 - 23.70	23.70 - 27.64	27.64 - 31.57	31.57 - 35.51	35.51 - 39.45					
Ø 2 PRL-300	15.83 - 23.70	19.76 - 27.64	23.70 - 31.57	27.61 - 35.51	31.57 - 39.45	35.51 - 43.39	39.45 - 47.32					
L	2.13		2.40	2.72	2.80	2.91	3.15					
	TR-200	TR-E200-69K	TR-200	TR-E200-69K	TR-200	TR-E200-69K	TR-200	TR-E200-69K	TR-200	TR-E200-69K	TR-200	TR-E200-69K
SPECIAL	\$1,295⁹⁵	\$2,259⁹⁵	\$1,295⁹⁵	\$2,259⁹⁵	\$1,295⁹⁵	\$2,259⁹⁵	\$1,295⁹⁵	\$2,259⁹⁵	\$1,295⁹⁵	\$2,259⁹⁵	\$1,295⁹⁵	\$2,259⁹⁵
L 1	4.72	5.79	5.00	6.06	5.32	6.38	5.39	6.46	5.51	6.58	5.75	6.81
L 2 PRL-100	5.91	6.97	6.18	7.24	6.50	7.56	6.58	7.64	6.69	7.76	6.93	7.99
SPECIAL	PRL-100 \$529⁹⁵			PRL-100 \$529⁹⁵								
L 2 PRL-300	6.30	7.36	6.58	7.64	6.89	7.95	6.97	8.03	7.09	8.15	7.32	8.39
SPECIAL	PRL-300 \$859⁹⁵			PRL-300 \$859⁹⁵								
L 3	4.06	5.12	4.33	5.39	4.65	5.71	4.72	5.79	4.84	5.91	5.08	6.14
L 4 PRL-100	5.24	6.30	5.51	6.58	5.83	6.89	5.91	6.97	6.02	7.09	6.26	7.32
L 4 PRL-300	5.63	6.69	5.91	6.97	6.22	7.28	6.30	7.36	6.42	7.48	6.65	7.72

Boring Heads & Accessories for BPS Bridge Systems

TR-200 Precision Boring Head for BPS Bridge System

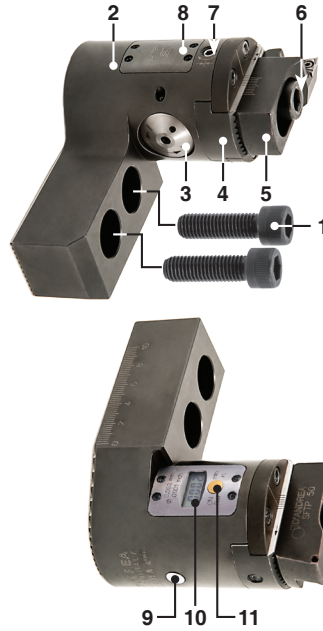


2 μm

Item Code	SPECIAL
TR-200	\$1,299. ⁹⁵

- 1 Body
- 2 Slide Toolholder
- 3 Vernier Scale
- 4 Slide Clamp Screw

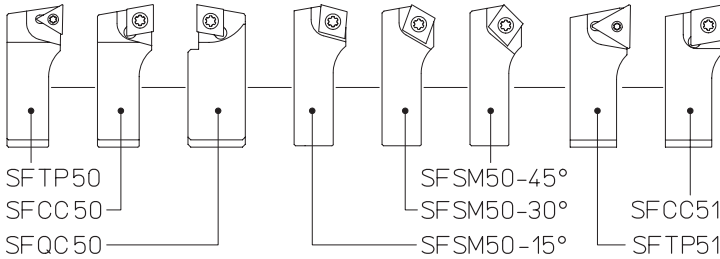
TR-E200-69K Digital Boring Head for BPS Bridge System



Item Code	SPECIAL
TR-E200-69K	\$2,289. ⁹⁵

- 1 Lock Screw
- 2 Tool Body
- 3 Set Screw
- 4 Slide Toolholder
- 5 Bit Holders
- 6 Tool Clamp Screw
- 7 Slide Clamp Screw
- 8 Battery Cover
- 9 Oiler
- 10 Digital Display
- 11 Selection Button

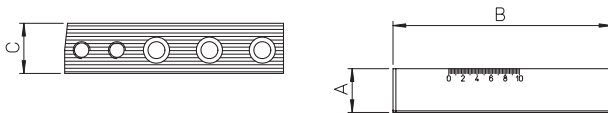
Cartridges for Precision Boring Heads



Cartridges for Precision Boring Heads

Item Code	A	B	C	SPECIAL	Insert	Screw	Wrench
SFTP-50	.748			\$103. ⁹⁵	TPGX-1103_	CS300890T	T-8
SFTP-51	.827	2.05	--	\$103. ⁹⁵	TCMT-32.5_	TS-4	T15
SFCC-50	.748			\$103. ⁹⁵	CCGT-09T3_		
SFCC-51	.827			\$103. ⁹⁵	CCMT-43_	TS-5	T25
SFQC-50	.807	2.09	.118	\$144. ⁹⁵	CCMT-32.5_	TS-4	T15
SFSM-50-15				\$103. ⁹⁵			
SFSM-50-30	.748	1.99	--	\$103. ⁹⁵	CCMT-32.5_	TS-4	T15
SFSM-50-45				\$103. ⁹⁵			

PRL Extensions for BPS Bridge System

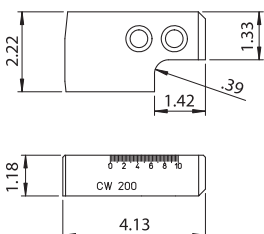
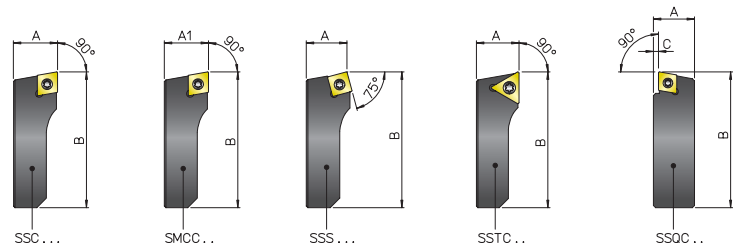


PRL Extensions

Item Code	A	B	C	SPECIAL
PRL-100	1.22	6.10	1.32	\$669. ⁹⁵
PRL-300	1.61	10.04	1.40	\$859. ⁹⁵

Roughing Cartridges for BPS Bridge System

These cartridges are used on the Bridges on page 10



Counter Weights for BPS Bridge System

Code	SPECIAL
CW-200	\$339. ⁹⁵

Roughing Cartridges for BPS Bridge System

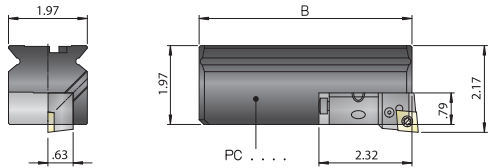
Item Code	A	A ¹	B	C	SPECIAL	Insert	Screw	Wrench
SSCC-90	1.260	--			\$269. ⁹⁵	CCMT-43_	TS-5	TORX T25
SSCN-95	1.575	--			\$329. ⁹⁵	CNM-64_	on request	
SMCC-90	--	1.248	5.12	--	\$269. ⁹⁵	CCMT-43_	TS-5	TORX T25
SSSC-90	1.260	--			\$269. ⁹⁵	SCMT-43_	TS-5	TORX T25
SSSN-95	1.575	--			\$329. ⁹⁵	SNM-64_	on request	
SSTC-90	1.260	--			\$269. ⁹⁵	TCMT-43_	TS-5	TORX T25
SSQC-90	1.240	--	4.80	.137	\$339. ⁹⁵	CCMT-43_	TS-5	TORX T25

Boring Tools, Slides and Accessories

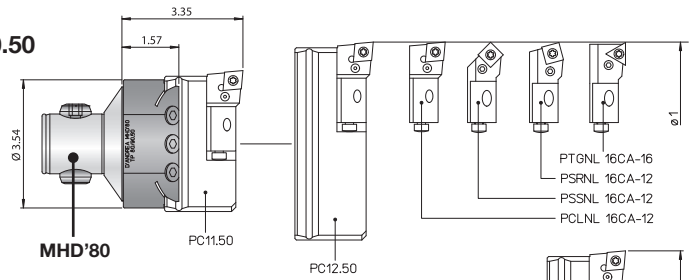


Boring Head	SPECIAL
TP-80/90.50	\$659.95
TP-80/125.50	\$749.95

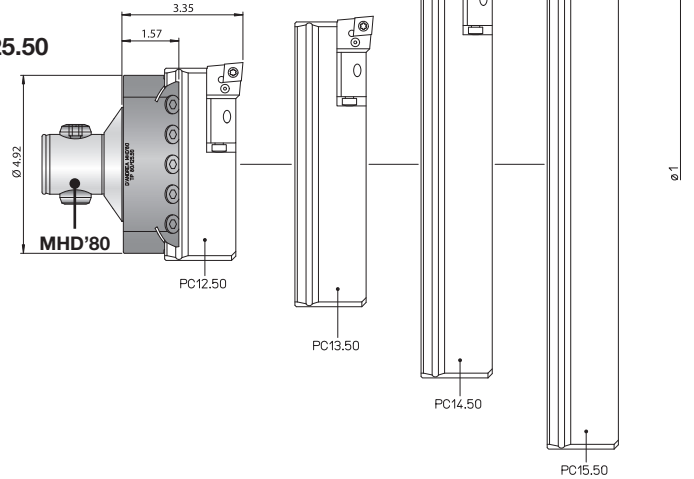
Cartridges	SPECIAL
PTGNL-16CA16	\$189.95
PCLNL-16CA12	\$189.95
PSSNL-16CA12	\$189.95
PSRNL-16CA12	\$189.95



TP 80/90.50

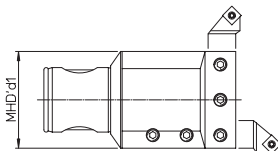
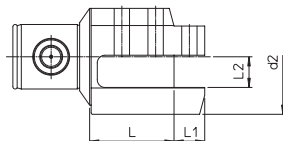


TP 80/125.50



Boring Slides - 3.94" to 19.69" for TP-80 Boring Heads

Item Code	B	Ø 1 TP-80/90	Ø 1 TP-80/125	SPECIAL
PC-11.50	3.74	3.94 - 1.51	--	\$299.95
PC-12.50	5.31	5.51 - 8.27	5.51 - 8.27	\$349.95
PC-13.50	7.87	8.27 - 12.20	8.27 - 12.20	\$389.95
PC-14.50	11.81	12.20 - 16.14	12.20 - 16.14	\$439.95
PC-15.50	15.75	16.14 - 19.69	16.14 - 19.69	\$479.95



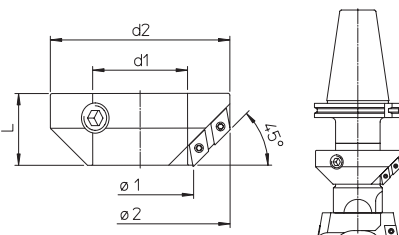
Boring Tools for Metric Lathe Tools

Item Code	MHD d1	d2	L	L	L2	SPECIAL
TU-50/60.16	50	2.36	1.73	.630 (16MM)	.630 (16MM)	\$529.95
TU-63/75.20	63	2.95	2.17	.789 (20MM)	.789 (20MM)	\$579.95
TU-80/95.25	80	3.74	2.56	.984 (25MM)	.984 (25MM)	\$619.95
TU-110/110.32	110	5.12	3.07	1.260 (32MM)	1.260 (32MM)	\$859.95

These holders use standard Left hand metric lathe tools



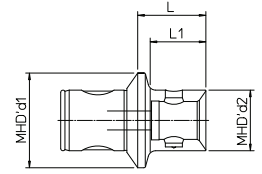
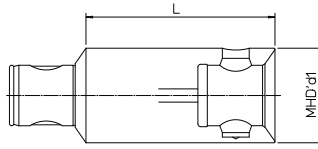
These Chamfer Rings are designed to be used with TS Double Cutter Boring Tools



45° Chamfer Rings for TS Boring Tools

Item Code	Ø1	d1 MHD	d2	L	SPECIAL	Insert
AS-16.45	.71 - 1.10	16	1.10	.51	\$109.95	DCMT-21.5_
AS-20.45	.91 - 1.26	20	1.26	.59	\$115.95	
AS-25.45	1.10 - 1.69	25	1.69	.71	\$119.95	
AS-32.45	1.38 - 2.13	32	2.13	.87	\$139.95	
AS-40.45	1.81 - 2.83	40	2.83	1.18	\$159.95	DCMT-32.5_
AS-50.45	2.20 - 3.74	50	3.74	1.50	\$239.95	
AS-63.45	2.95 - 4.92	63	4.92	1.81	\$329.95	DCMT-43
AS-80.45	3.74 - 6.50	80	6.50	2.28	\$369.95	

MHD Extensions & Reducers

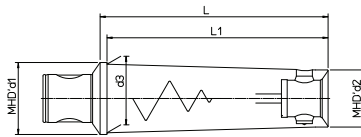


Extensions

Item Code	MHD d1	L	SPECIAL
PR-14.25	M14	.98	\$134. ⁹⁵
PR-16.25	M16	.98	\$134. ⁹⁵
PR-20.32	M20	1.26	\$134. ⁹⁵
PR-25.25	M25	.98	\$134. ⁹⁵
PR-25.40		1.57	\$134. ⁹⁵
PR-32.32	M32	1.26	\$134. ⁹⁵
PR-32.50		1.97	\$144. ⁹⁵
PR-40.40	M40	1.57	\$144. ⁹⁵
PR-40.63		2.48	\$150. ⁹⁵
PR-50.50	M50	1.97	\$150. ⁹⁵
PR-50.80		3.15	\$165. ⁹⁵
PR-50.100		3.94	\$175. ⁹⁵
PR-63.63	M63	2.48	\$175. ⁹⁵
PR-63.100		3.94	\$196. ⁹⁵
PR-63.125		4.92	\$207. ⁹⁵
PR-80.80	M80	3.15	\$248. ⁹⁵
PR-80.125		4.92	\$269. ⁹⁵
PR-80.160		6.30	\$289. ⁹⁵
PR-110.140	M110	5.51	\$621. ⁹⁵
PR-110.200		7.87	\$641. ⁹⁵
PR-140.140	M140	5.51	\$724. ⁹⁵
PR-140.250		9.84	\$931. ⁹⁵

Reducers

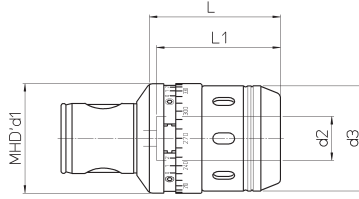
Item Code	MHD d1	MHD d2	L	L1	SPECIAL
RD-16/14.25	M16	M14	.98	.77	\$134. ⁹⁵
RD-20/14.20	M20	M14	.79	.57	\$134. ⁹⁵
RD-20/16.20		M16	.79	.63	\$134. ⁹⁵
RD-25/14.20	M25	M14	.79	.53	\$134. ⁹⁵
RD-25/16.20		M16	.79	.59	\$134. ⁹⁵
RD-25/20.25		M20	.98	.79	\$134. ⁹⁵
RD-32/14.25	M32	M14	.98	.69	\$134. ⁹⁵
RD-32/16.24		M16	.94	.71	\$134. ⁹⁵
RD-32/20.25		M20	.98	.79	\$134. ⁹⁵
RD-32/25.28		M25	1.10	.91	\$134. ⁹⁵
RD-40/14.25	M40	M14	.98	.65	\$144. ⁹⁵
RD-40/16.24		M16	.94	.67	\$144. ⁹⁵
RD-40/20.26		M20	1.02	.79	\$144. ⁹⁵
RD-40/25.28		M25	1.10	.87	\$144. ⁹⁵
RD-40/32.32		M32	1.26	1.06	\$144. ⁹⁵
RD-50/14.25	M50	M14	.98	.57	\$155. ⁹⁵
RD-50/14.40		M14	1.57	1.16	\$186. ⁹⁵
RD-50/16.24		M16	.94	.59	\$155. ⁹⁵
RD-50/16.40		M16	1.57	1.26	\$175. ⁹⁵
RD-50/16.74		M16	2.91	2.56	\$207. ⁹⁵
RD-50/20.26		M20	1.02	.71	\$155. ⁹⁵
RD-50/20.70		M20	2.76	2.44	\$186. ⁹⁵
RD-50/20.93		M20	3.66	3.35	\$207. ⁹⁵
RD-50/25.28		M25	1.10	.83	\$155. ⁹⁵
RD-50/25.87		M25	3.43	3.15	\$196. ⁹⁵
RD-50/25.117		M25	4.61	4.33	\$217. ⁹⁵
RD-50/32.32		M32	1.26	.98	\$165. ⁹⁵
RD-50/32.87		M32	3.43	3.15	\$207. ⁹⁵
RD-50/32.144		M32	5.67	5.39	\$217. ⁹⁵
RD-50/40.36	M40	1.42	1.18	\$165. ⁹⁵	
RD-50/40.87	M40	3.43	3.15	\$207. ⁹⁵	
RD-50/40.176	M40	6.93	6.69	\$238. ⁹⁵	
RD-50/63.56	M50	M63	2.20	--	\$165. ⁹⁵
RD-63/50.40	M63	M50	1.57	1.34	\$165. ⁹⁵
RD-80/50.45	M80	M50	1.77	1.42	\$217. ⁹⁵
RD-80/63.60		M63	2.36	2.05	\$217. ⁹⁵
RD-110/80.70	M110	M80	2.76	2.05	\$621. ⁹⁵
RD-140/80.70	M140	M80	2.76	2.01	\$724. ⁹⁵



MHD - RAV Heavy Metal Reducer

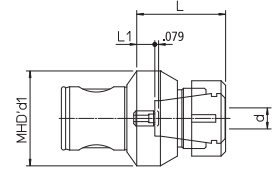
Item Code	MHD d1	MHD d2	d3	L	L1	SPECIAL
RAV-50/16.74	M50	16	.69	2.91	2.56	\$310. ⁹⁵
RAV-50/20.93		20	.85	3.66	3.35	\$341. ⁹⁵
RAV-50/25.117		25	1.06	4.61	4.33	\$414. ⁹⁵
RAV-50/32.144		32	1.38	5.97	5.43	\$610. ⁹⁵
RAV-50/40.176		40	1.85	6.93	6.69	\$931. ⁹⁵
RAV-63/50.220	M63	50	2.36	8.66	8.43	\$1,656. ⁹⁵
RAV-80/63.280	M80	63	3.03	11.02	10.71	\$3,415. ⁹⁵

MHD Holders and Accessories



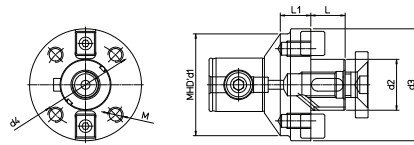
Ultra-Tight FORCE Milling Chuck

Item Code	MHD d1	d2	d3	L	SPECIAL	Wrench
AMC-M50-0750-TR	M50	.750	1.89	2.36	\$399.95	WR-MC075
AMC-M50-20MM-TR		20 MM			\$399.95	
AMC-M63-1250-TR	M63	1.250	2.60	3.15	\$485.95	WR-MC125
AMC-M63-32MM-TR		32 MM			\$485.95	



MHD ER Collet Chucks

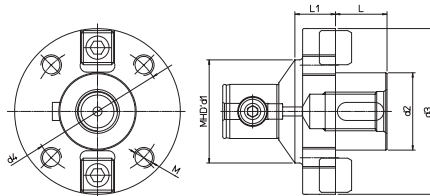
Item Code	MHD	Range	Collets	L	SPECIAL	Wrench
PE-16/ER11M	M16	.02 - .28	ER11	.98	\$140.95	E11M
PE-20/ER16M	M20	.02 - .39	ER16	1.26	\$144.95	E16M
PE-25/ER20M	M25	.04 - .51	ER20	1.57	\$151.95	E20M
PE-32/ER25M	M32	.04 - .63	ER25	1.65	\$151.95	E25M
PE-40/ER25	M40	.04 - .63		1.77	\$155.95	E25
PE-50/ER25	M50	.04 - .63	ER32	1.89	\$165.95	
PE-50/ER32		.08 - .79		2.17	\$165.95	
PE-63/ER32	M63	.08 - .79	ER40	2.32	\$175.95	E40
PE-63/ER40		.12 - 1.02		2.52	\$196.95	



MHD Shell Mill Holders

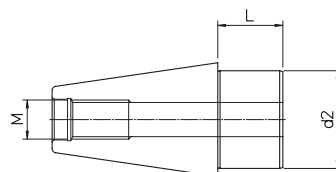
Item Code	MHD	d2	d3	L	L1	SPECIAL
PFS-40-3/4	M40	.750	1.57	.75	.51	\$165.95
PF-50-3/4	M50	.750	1.57	.68	.59	\$165.95
PF-50-1		1.000	1.96	.68	.59	\$165.95
PF-63-3/4	M63	.750	1.57	.68	.65	\$175.95
PF-63-1		1.000	2.36	.68	.59	\$175.95
PF-63-1.1/4		1.250	2.75	.68	.75	\$196.95
PF-80-1.1/2		1.500	3.46	.94	.94	\$238.95
PF-80-2	M80	2.000	3.85	.94	1.06	\$238.95

MHD Shell Mill Holders for BPS Bridge System (Page 10 & 11)



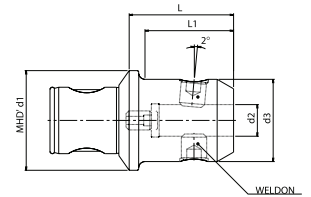
MHD Shell Mill Holders for BPS Bridge System

Item Code	MHD d1	d2	d3	D4	M	L	L1	SPECIAL
PF-80/40	M80	40MM	84	66.7	M12	27	27	\$239.95
PF-80/60		60MM	128.5	101.6	M16	40	40	\$369.95
PF-110/40	M110	40MM	88	66.7	M12	27	27	\$699.95
PF-110/60		60MM	128.5	101.6	M16	40	40	\$699.95
PF-140/40	M140	40MM	88	66.7	M12	27	27	\$799.95
PF-140/60		60MM	140	101.6	M16	40	10	\$799.95



Center Plug for BPS Bridge System

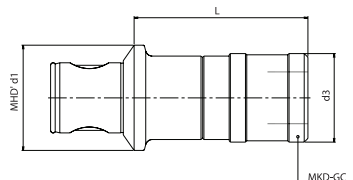
Item Code	Taper	d2	L	M	SPECIAL
ISO50-D.60	DIN 50	60mm	40mm	M24	\$249.95
ISO60-D.60	DIN 60	60mm	40mm	M30	\$399.95



MHD Weldon Shank End Mill Holders

Item Code	MHD d1	d2	d3	L	L1	SPECIAL
AW-50-1/4	M50	1/4"	.98	1.38	.93	\$150.95
AW-50-3/8		3/8"	1.38	2.05	1.65	\$150.95
AW-50-1/2		1/2"	1.65	2.24	1.89	\$150.95
AW-50-5/8		5/8"	1.89	2.64	2.40	\$150.95
AW-50-3/4		3/4"	1.97	---	---	\$150.95
AW-63-1/2	M63	1/2"	1.65	2.24	1.89	\$165.95
AW-63-5/8		5/8"	1.89	2.52	2.09	\$165.95
AW-63-3/4		3/4"	1.97	2.60	2.20	\$165.95
AW-63-1		1.00"	2.48	3.07	---	\$165.95
AW-63-1.1/4	M80	1.1/4"	2.76	---	---	\$186.95
AW-80-1.1/2		1.1/2"	3.15	3.27	---	\$227.95
AW-80-2		2.00"	3.74	3.94	---	\$227.95

Metric Holders available

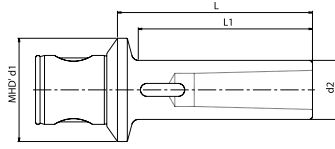


MHD Tapping Chuck Holders

Item Code	MHD d1	Capacity	Adapter Size	L	d3	SPECIAL
AM-50/M3-12	M50	M3-M12	1	2.83	1.42	\$465.95
AM-50/M8-20		M8-M20	2	4.17	2.09	\$486.95
AM-63/M3-12	M63	M3-M12	1	2.76	1.42	\$465.95
AM-63/M8-20		M8-M20	2	4.09	2.09	\$496.95

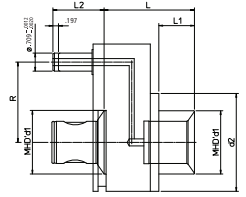
These chucks use the standard Bilz style Tapping Collets

MHD Milling Chucks & Coolant Chucking Tools



MHD Morse Taper Holders

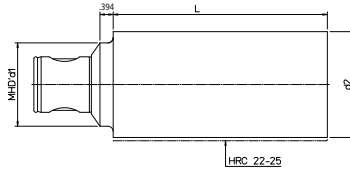
Item Code	MHD d1	MORSE	d2	L	L1	SPECIAL
CM-50/1	M50	MT1	.79	3.15	2.68	\$186 ^{.95}
CM-50/2		MT2	1.18	3.94	3.39	\$207 ^{.95}
CM-50/3		MT3	1.42	4.72	4.33	\$227 ^{.95}
CM-63/3	M63	MT3	1.42	4.72	4.25	\$227 ^{.95}
CM-63/4		MT4	1.89	5.91	5.24	\$248 ^{.95}



Coolant Chucking Tools ACR/NC

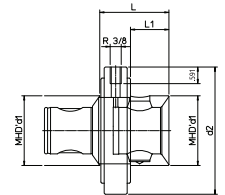
Item Code	MHD d1	R	d2	L	Max RPM	SPECIAL
ACR/NC-50/50-R.65	M50	65 MM	3.15	2.83	7000	\$1,614 ^{.95}
ACR/NC-50/50-R.80		80 MM				\$1,614 ^{.95}
ACR/NC-63/63-R.80	M63	80 MM	3.94	3.46	5600	\$1,759 ^{.95}

Please note. Max coolant pressure 10 Bar



MHD Standard Blanks HRC 22 - 25

Item Code	MHD d1	d2	L	kg	SPECIAL
NS-50	M50	2.48	6.30	4.20	\$248 ^{.95}
NS-63	M63	3.15	7.87	8.70	\$351 ^{.95}
NS-80	M80	3.94	9.84	16.00	\$445 ^{.95}
NS-110	M110	5.12	9.84	18.00	\$724 ^{.95}
NS-140	M140	5.91	9.84	30.00	\$931 ^{.95}



Coolant Chucking Tools ACR

Item Code	MHD d1	d2	L	L1	Max RPM	SPECIAL
ACR-63/63	M63	4.53	2.48	1.38	3500	\$621 ^{.95}

Please note. Max coolant pressure 10 Bar

D'ANDREA TA-CENTER

Standard tools can be mounted on D'ANDREA toolholders to perform simple machining and multiples of internal and external turning operations, taper and variable boring, concave and convex radius machining, grooves, cylindrical and conical threading, facing, complex profiles etc.



TYSON TOOL

TYSON TOOL COMPANY LIMITED
75 ORMONT DRIVE, TORONTO, ON M9L-2S3
TEL: 416.746.3688 • FAX: 416.746.5415
www.tysonstool.com • sales@tysonstool.com