

# rineck

• Werkzeugtechnik

Perfect **shrinkage technology**  
combined with innovative **technology**  
and ergonomic **design**

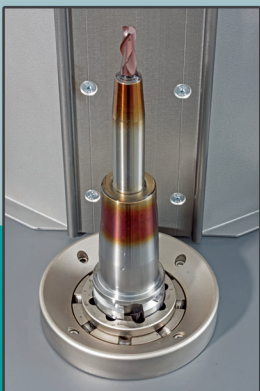


 **Induktherm**  
rapid shrink II VCS  
+ elevator cool technology  
Stand Alone Shrink Unit  
with Cooling System

 **Induktherm**  
rapid shrink II VCS  
Table Top Shrink Unit

Suitable for tools

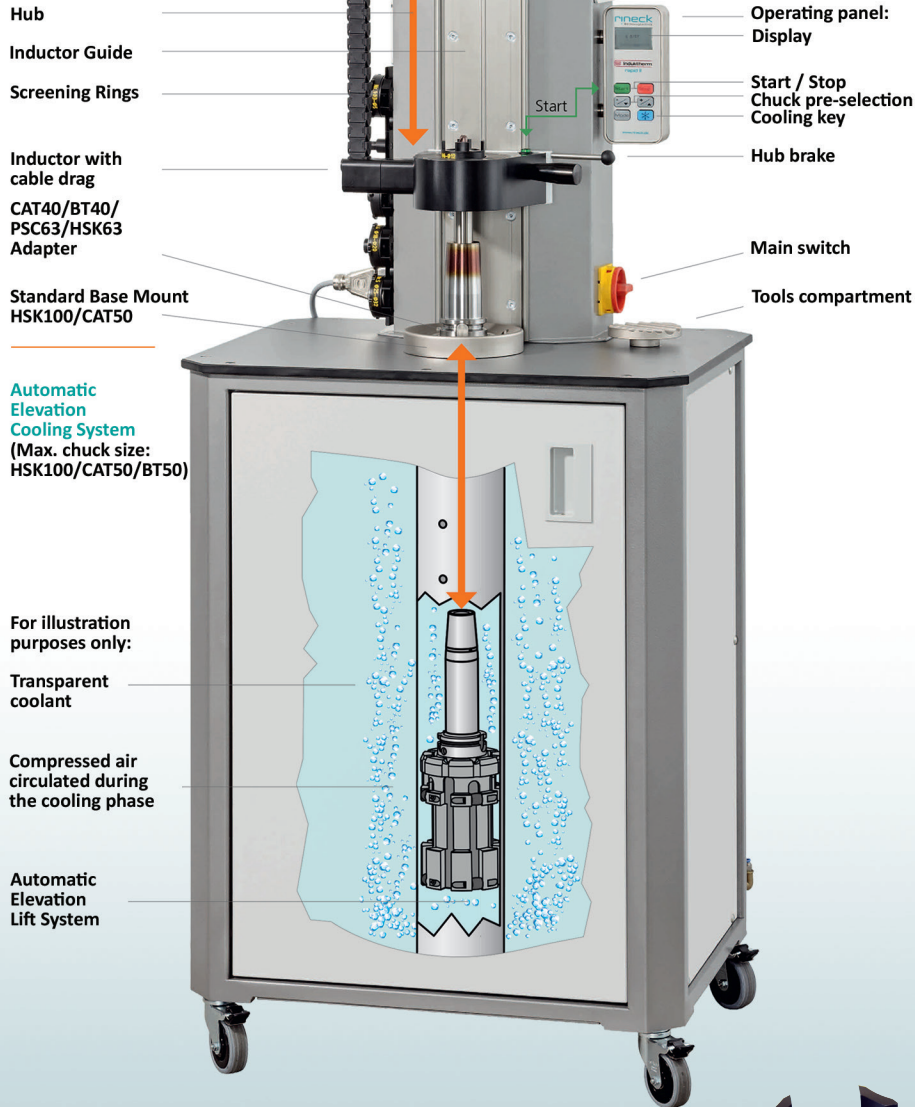
- Ø 3 to 32mm
- Ø 1/8" to 1-1/4"



TOOLS ARE OUR PASSION | MADE IN GERMANY

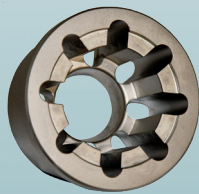
Approved for Canadian  
600V Electrical Standards

## Induktherm Rapid Shrink II VCS



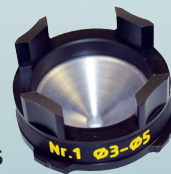
### Optional Reducing Adapter

Adapter for	Order No.
HSK-A80	990-356
HSK-63	990-354
HSK-A/E50	990-353
HSK-A/E40	990-352
HSK-A/E32	990-351
HSK-E25	990-350
CAT40/BT40	990-354
CAT30/BT30	990-355
PSC63	990-354



### Screening rings

No.	Diameter	Size	Order No.
1	Ø3 - Ø5	1/8 - 3/16	990 - 605
2	Ø6 - Ø12	1/4 - 1/2	990 - 612
3	Ø14 - Ø16	9/16 - 5/8	990 - 616
4	Ø18 - Ø20	3/4	990 - 620
5	Ø25 - Ø32	1 - 1-1/4	990 - 632



## Device Description

The induction generator and the induction coil are designed for continuous operation. All shrink accessories have a fixed location on the machine that are easily within reach so that orderliness and ease of operation are of high importance in regular operation.

The logical positioning of auxiliary appliances on the machine and an intelligent software control make it very easy for new operators to quickly become familiar with switching over of shrink chucks and/or different tool diameters. The inductor has been designed in connection with the generator so that carbide tools with shanks diameters of 3 to 32mm (1/8" to 1-1/4") and HSS tools of diameter 6 to 32mm (1/4" to 1-1/4") can be fitted easily and without issue.

To operate, the chuck that is to be shrunk is placed in the toolholder. Larger tools such as CV50 and HSK100 mount directly whereas smaller tapers such as CV40 and HSK63 make use of reducing-adapters. The inductor housing, once fitted with select screening ring, is then placed over the chuck.

On the operating panel, "Arrow" keys navigate the menus to select the size of tool or the chuck diameter and the different instep shafts (DIN-chuck, 4.5° of standard measure chuck and/or 3° of super slender chucks) which are to be shrunk according to the required energy supply and heating time.

After pressing the "Start" button, the chuck is quickly heated and the tool is then inserted into the expanded chuck. The heating times are between 3 and 9 seconds, dependent on the corresponding energy supply required for different sized tools. The procedure is identical for when removing of tools.

### Induktherm rapid shrink II VC

Performance	10kw
Measurements (MM)	B 680 x T 520 x H1600
Weight	88 kg
Power supply	600 volt
max. chuck length	400mm
Carbide-Shafts	Ø 3-32mm / 1/8" - 1-1/4"
HSS-Shafts	Ø 6-32mm / 1/4" - 1-1/4"

**Approved for Canadian  
600V Electrical Standards**

# TYSON TOOL®

TYSON TOOL COMPANY LIMITED  
75 ORMONT DRIVE, TORONTO, ON M9L-2S3  
TEL: 416.746.3688 • FAX: 416.746.5415  
www.tysonstool.com • sales@tysonstool.com

Available From: