

rineck
• Werkzeugtechnik

Perfect
shrink technology

combined with innovative

technology

and ergonomic

design

 **Induktherm**

rapid shrink II VCS

+ elevator cool technology

**Stand Alone Shrink Unit
with Automatic Cooling System**



Suitable for tools of

- Ø 3 to 32mm
- Ø 1/8" to 1.1/4"

Approved for Canadian 600 volt Electrical Standards

TOOLS ARE OUR PASSION

MADE IN GERMANY

Only those who constantly look to improve will remain innovative. We at Rineck place great value on improvement, without forgetting the well-proven ideas. Innovation and development – every day our thinkers consider how to offer our customers the best technical solutions and how to make proven shrink technology even better.

Precise shrink connections are the basis for functionality and problem-free handling: **The Induktherm rapid shrink II VCS machine** with the patented **Elevation-Cooling-System** from the company **Rineck** – is problem free.

Device Description

The induction generator and the induction coil are designed for continuous operation. All shrink accessories have a fixed location on the machine that are easily within reach so that orderliness and ease of operation are of high importance in regular operation.

The logical positioning of auxiliary appliances on the machine and an intelligent software control make it very easy for new operators to quickly become familiar with switching over of shrink chucks and/or different tool diameters. The inductor has been designed in connection with the generator so that carbide tools with shanks diameters of 3 to 32mm (1/8" to 1-1/4") and HSS tools of diameter 6 to 32mm (1/4" to 1-1/4") can be fitted easily and without issue.

To operate, the chuck that is to be shrunk is placed in the toolholder. Larger tools such as CV50 and HSK100 mount directly whereas smaller tapers such as CV40 and HSK63 make use of reducing-adapters. The inductor housing, once fitted with select screening rings, is then placed over the chuck.

On the operating panel, "Arrow" keys navigate the menus to select the size of tool or the chuck diameter and the different instep shafts (DIN-chuck, 4.5° of standard measure chuck and/or 3° of super slender chucks) which are to be shrunk according to the required energy supply and heating time.

After pressing the "Start" button, the chuck is quickly heated and the tool is then inserted into the expanded chuck. The heating times are between 3 and 9 seconds, dependent on the corresponding energy supply required for different sized tools. The procedure is identical for when removing of tools.

Induktherm rapid shrink II VC	
Performance	10kw
Measurements (MM)	B 680 x T 520 x H1600
Weight	88 kg
Power supply	600 volt
max. chuck length	400mm
Carbide-Shafts	Ø 3-32mm / 1/8" - 1-1/4"
HSS-Shafts	Ø 6-32mm / 1/4" - 1-1/4"

Approved for Canadian 600V Electrical Standards

Induktherm Rapid Shrink II VCS

Order No.: RIN-990-020

Hub

Inductor Guide

Screening Rings

Inductor with cable drag

CAT40/BT40/
PSC63/HSK63
Adapter

Standard Base Mount
HSK100/CAT50

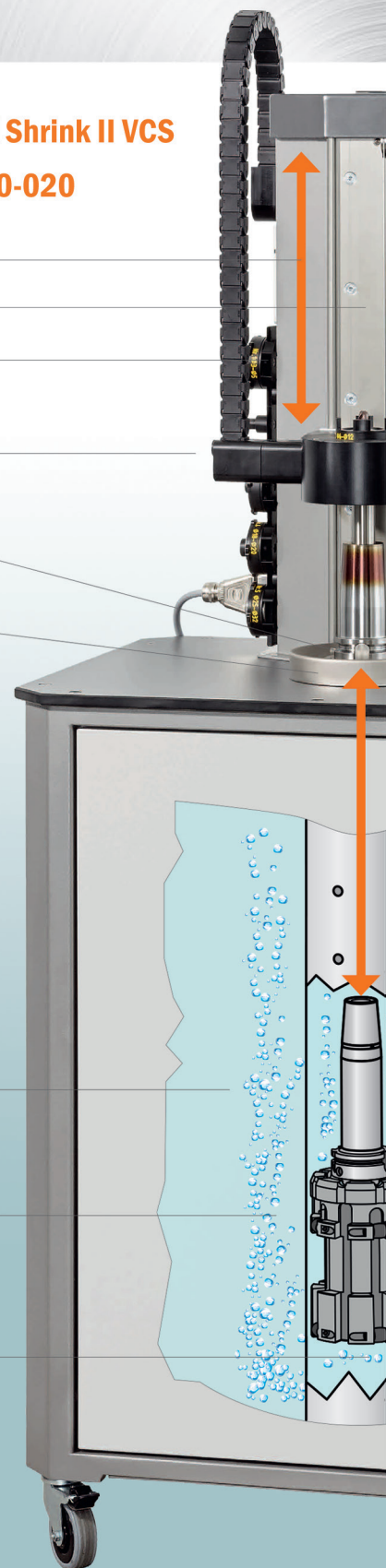
Automatic
Elevation
Cooling System
(Max. chuck size:
HSK100/CAT50/BT50)

For illustration
purposes only:

Transparent
coolant

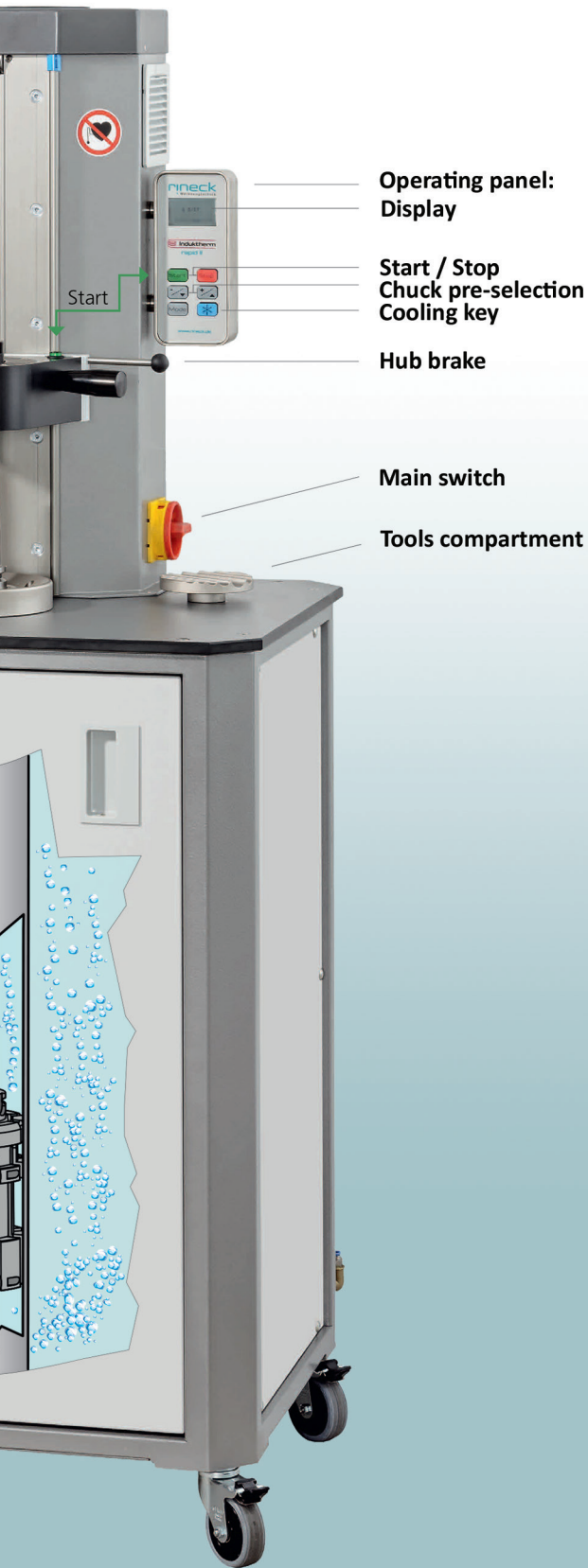
Compressed air
circulated during
the cooling phase

Automatic
Elevation
Lift System



rineck

• Werkzeugtechnik



Operating panel:
Display

Start / Stop
Chuck pre-selection
Cooling key

Hub brake

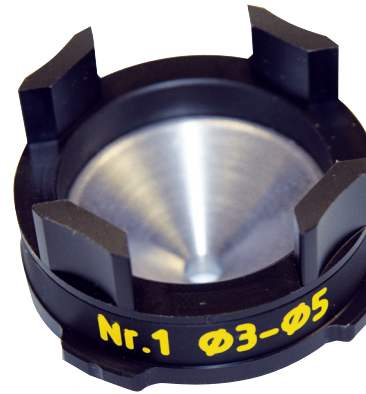
Main switch

Tools compartment

Screening rings

The screening rings made from a sintered material are used for the optimal energy flux direction example: during the shrinkage of HSS tools.

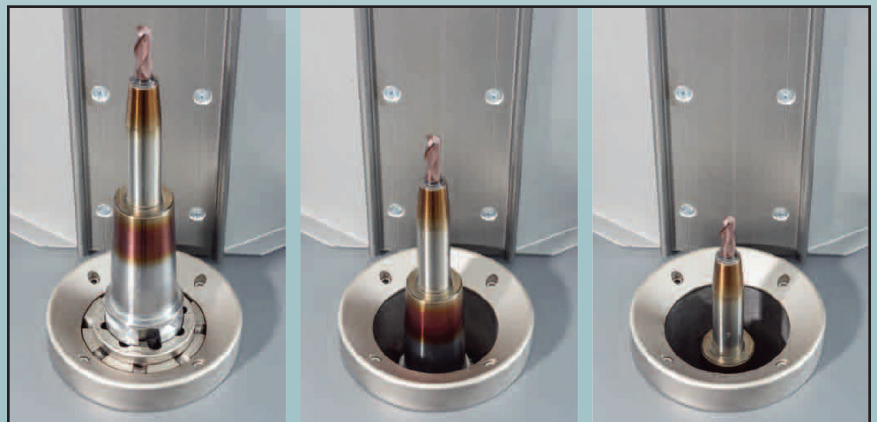
No.	Diameter	Size	Order No.
1	Ø3 - Ø5	1/8 - 3/16	990 - 605
2	Ø6 - Ø12	1/4 - 1/2	990 - 612
3	Ø14 - Ø16	9/16 - 5/8	990 - 616
4	Ø18 - Ø20	3/4	990 - 620
5	Ø25 - Ø32	1 - 1-1/4	990 - 632



Elevation Cooling System

After completion of the heating phase, the hot chuck is then lowered into the cooling tank by pressing the "Cooling" button. Once the cooling time is completed (determined by the control unit according to volume measure), the cooled chuck is automatically elevated and can then be safely removed. Cooling times vary between 15 and 50 seconds depending on the mass of the chuck which must be chilled. (Coolant tank contents: 60 litres).

The expected life span of coolant is dependent on frequency of use and the cleanliness of tools being shrunk, but will normally last between three to four months. Old coolant is then disposed of in accordance with normal used coolant shop practices. The machine is also equipped with a convenient maintenance extraction pump to remove coolant for regular maintenance, located in the coolant cabinet below the machine.



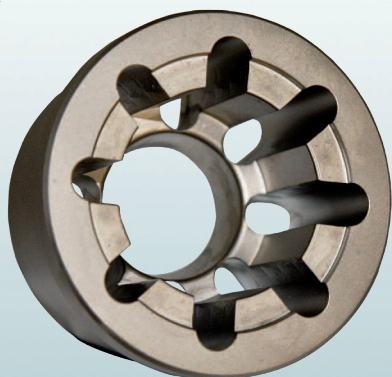
The chuck HSK 63 to be chilled being lowered.
Cool time: 35 seconds.

TOOLS ARE OUR PASSION | MADE IN GERMANY

Optional Extras

Reducing Adapter

The adapter contained in the scope of delivery is suitable for the conical shaped HSK-63, CAT40, BT40 and PSC 63 (Article No. 990-354). All further adapters can be ordered under the below indicated article number.



Adapter for	Order No.
HSK-A80	990-356
HSK-63	990-354
HSK-A/E50	990-353
HSK-A/E40	990-352
HSK-A/E32	990-351
HSK-E25	990-350
CAT40/BT40	990-354
CAT30/BT30	990-355
PSC63	990-354

Coolant

Coolant available from Tyson Tool

- PRODUCTO™ SP-787CT



TYSON TOOL®

TYSON TOOL COMPANY LIMITED
75 ORMONT DRIVE, TORONTO, ON M9L-2S3
TEL: 416.746.3688 • FAX: 416.746.5415
www.tysontool.com • sales@tysontool.com

Available From: