

rineck
• Werkzeugtechnik

Perfect
shrinkage technology
combined with innovative
technology
and ergonomic
design

 **Induktherm**

rapid shrink II VCS

Suitable for tools of
Ø 3 to 32 mm
Ø 1/8" to 1.1/4"



Certified for Canadian 600 volt Electrical Standards

TOOLS ARE OUR PASSION | MADE IN GERMANY

Only he who wants to become increasingly better remains good. We at **Rineck** place great value on new things, without forgetting the well-proven old things. Innovation and development – daily our thinkers consider how to offer our customers the optimal solution and how to make the tried and tested shrinkage technology even better. Precise shrinkage connections are the basis for functionality and problem-free handling: with the shrinkage device **Induktherm rapid shrink II VCS** from the company **Rineck** – **no problem**.

Device description

The induction generator and the induction coil are designed for continuous operation. All accessories have a fixed place at the device so that orderliness and ease of operation have a high significance in the working area.

Because of the logical positioning of auxiliary appliances at the device and an intelligent software control, it is very easy for everyone to quickly become familiar with the conversion of one to the other shrink chuck and/or tool diameter. The inductor has been designed in connection with the generator so that HM tools with shafts of diameter 3 to 32 mm and HSS tools of diameter 6 to 32 mm can be fitted easily and without problems.

The chuck which is to be shrunk is placed in the clamp. SK 50 and HSK 100 directly, all other conical shaped ones requiring reducing-adapters. The inductor housing, fitted with the necessary screening ring, is brought up to the chuck.

At the operating panel, and using the arrow keys on the keyboard, the tool mating is selected, that is to say for the chuck diameter and the different instep shafts (DIN-chuck, 3° of standard measure chuck and/or 3° of super slender chucks) to be shrunk are selected according to the necessary energy supply and heating time.

After pressing the “start” button, the chuck is heated with the necessary and the tool is inserted. The heating times are between 3 and 9 seconds, in each case resulting from the corresponding energy supply. The procedure is similar by removal of tools.

Induktherm rapid shrink II VCS	
Performance	10 kw
Measurements (mm)	B 680 × T 520 × H 1600
Weight	88 kg
Power supply	600 volt
max. chuck length	400 mm
HM-shafts	ø 3 – 32 / 1/8" - 1.1/4"
HSS-shafts	ø 6 – 32 / 1/4" - 1.1/4"

Standard scope of delivery

Inductor guide

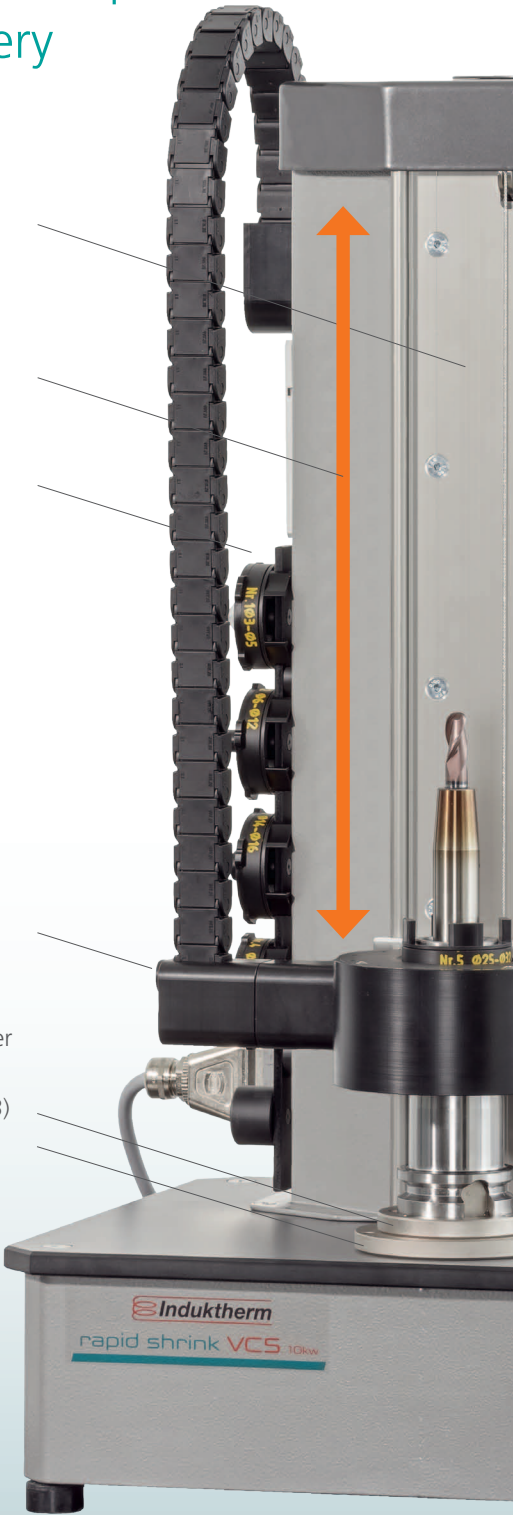
Hub

Screening rings

Inductor with cable drag

Reducing-adapter
(in the forms:
HSK100 / HSK63)

Basic insert
HSK100 / SK50



Artikel-Nr. 990-019CS

Certified for Canadian 600 volt Electrical Standards



Operating panel:

Display

Start / stop

Chuck pre-selection

No function with
this model!

Brake

Main switch

Tools compartment

Screening-rings

The screening-rings of a specific sinter material are used for the optimal energy flux direction e.g. during the shrinkage of HSS tools.

No.	Diameter	Article-No.
1	ø3 – ø5	990-605
2	ø6 – ø12	990-612
3	ø14 – ø16	990-616
4	ø18 – ø20	990-620
5	ø25 – ø32	990-632



Protective gloves

During the operation of the inductive shrinkage device, the chuck is heated to up to 300° C. Therefore you must use the protective gloves which are made available. Severe burns hazard!

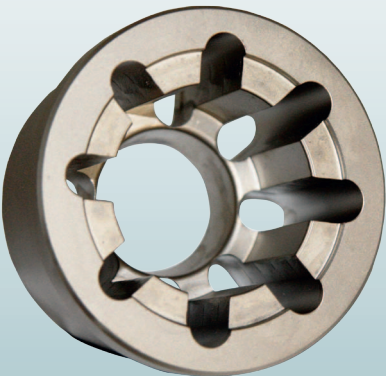
Art.-Nr. 990-398



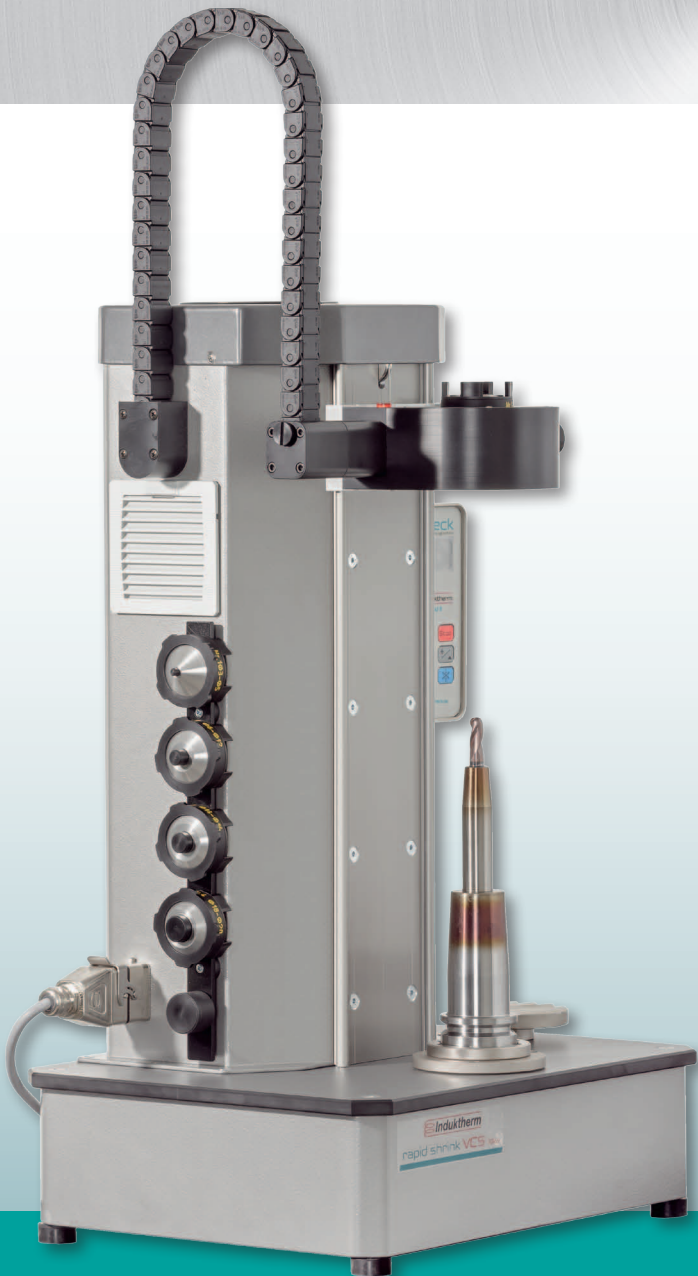
Optional extras

Reducing-adapter

The adapter contained in the scope of delivery is suitable for the conical shaped HSK-63, SK40, BT40 and PSC 63 (Article No. 990-354). All further adapters can be ordered under the below indicated article number.



Adapter for	Article-No.
HSK-A80	990-356
HSK-63	990-354
HSK-A/E50	990-353
HSK-A/E40	990-352
HSK-A/E32	990-351
HSK-E25	990-350
SK40/BT40	990-354
SK30/BT30	990-355
PSC63	990-354



TYSON TOOL®

TYSON TOOL COMPANY LIMITED
 75 Ormont Drive, Toronto, ON. M9L-2S3
 Tel: (416) 746-3688 - - Fax: (416) 746-5415
www.tysontool.com - - sales@tysontool.com

Available from:

TOOLS ARE OUR PASSION | MADE IN GERMANY