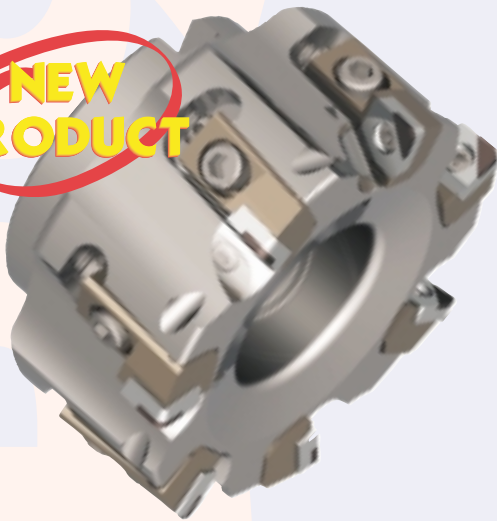


CEP90 HIGH SPEED FACE MILLS

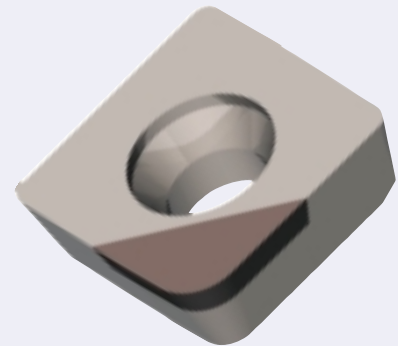
For PCD Milling Applications

**NEW
PRODUCT**



- *Uses PCD tipped inserts secured in insert cartridges, or brazed PCD tipped cartridges*
- *Greater savings realized by using PCD tipped inserts because of quicker setups and indexing times*
- *Cutter bodies are made of high strength aluminum and coated for greater surface hardness*
- *Aluminum body enables easy handling and eliminates most balancing problems*
- *Used in machining non-ferrous metals and abrasive non-metallics*

- *High quality PCD tipped inserts*
- *Inserts are precision ground requiring little or no adjustment of the insert cartridge*
- *Extended tool life through greater resistance to wear, chipping and cracking than standard carbide inserts*
- *Brazed tipped cartridges are also available with 1/32" or 3/32" radii*



RECOMMENDED APPLICATIONS:

Non-ferrous metals:

- aluminum alloys
- bronze, copper and brass alloys
- magnesium alloys

Abrasive non-metallics:

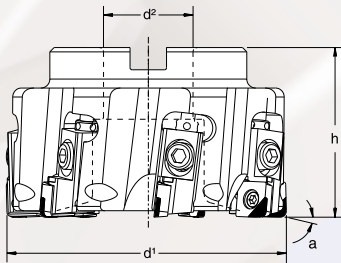
- carbon composites
- fiberglass and plastics
- graphite and carbon

CEP90

HIGH SPEED FACE MILLS



For PCD MILLING APPLICATIONS



d ¹	DESIGNATION	d ²	h	a	flutes	lbs.	Max. rpm
INSERT USED:		FPCW-43_R		Maximum Depth of Cut:		.225"	
3.00	CEP90-3FP4	1.000	2.375	0°	5	2.0	14,200
4.00	CEP90-4FP4	1.250	2.375	0°	7	2.0	12,250
5.00	CEP90-5FP4	1.500	2.375	0°	8	3.0	11,000
6.00	CEP90-6FP4	1.500	2.375	0°	10	4.5	10,000
8.00	CEP90-8FP4	2.500	2.375	0°	10	6.5	8,600
10.00	CEP90-10FP4	2.500	2.375	0°	12	8.0	7,750

FPCW-... R

INSERT	DESIGNATION	DIMENSIONS					PCD GRADE	
		l	s	r	d	d ₁	E20	E30
	FPCW-432R	.5003	.188	1/32	1/2	.195	●	●
	FPCW-436R			3/32			●	●

CEP90 CUTTING DATA

MATERIAL	SFPM	FPT
Silicon Aluminum ≥ 19%	2000 - 4000	.003 - .025
Silicon Aluminum ≥ 12%	2000 - 4000	.003 - .025
Silicon Aluminum ≥ 7%	3000 - 6000	.003 - .025

SPARE PARTS

Insert Cartridge	CE67693
Cartridge Adjusting Screw	CE68232
Insert Lock Screw	CE72304
SHCS for Insert Cartridge	CE70176
Lock Screw Wrench	214.80.824

TYSON TOOL

TYSON TOOL COMPANY LIMITED
 75 ORMONT DRIVE, TORONTO, ONTARIO, M9L-2S3
 TEL: (416) 746-3688 ~ FAX: (416) 746-5415
 INTERNET: www.tysonstool.com ~ E-MAIL: sales@tysonstool.com



Available from:

Specifications are subject to change without notice. No responsibility for errors and/or printing errors will be accepted.

TI03-CEP90-0103-2M