

TX90

cylindrical shank end mills

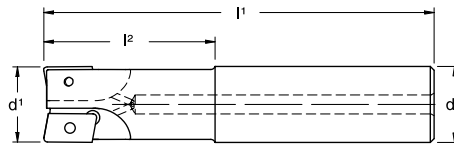
Featuring:

- Cylindrical shanks
- Coolant through
- Extra long shanks

Specifically designed for:

- Milling Chucks
- Hydraulic Chucks
- Shrink-fit Systems

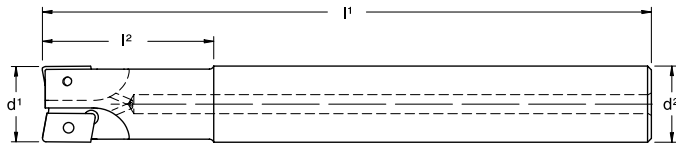
TX90 Cylindrical Shank
Standard Length End Mills with Coolant



d^1	DESIGNATION	d^2	Depth of Cut a_p	l^1	l^2	Flutes
INSERT:			222.79.600 / 610			
.625	TXD90CY-0625C	.625	.33	3.00	1.09	2
.750	TXD90CY-0750C	.750	.33	3.50	1.46	2
1.000	TXD90CY-1000-4C	1.000	.33	4.00	1.71	3
Spare Parts: Torx® Insert Screw #214.80.687			Torx® Wrench #214.80.866 (S/D) or #214.80.011 (F/T)			
INSERT:			222.79.400 / 500 / 510 / 564			
1.000	TXP90CY-1000-4C	1.000	.55	4.00	1.71	2
1.250	TXP90CY-1250-5C	1.250	.55	4.00	1.71	3
1.500	TXP90CY-1500-5C	1.250	.55	4.40	2.11	4
Spare Parts: Torx® Insert Screw #214.80.388			Torx® Wrench #214.80.824 (S/D) or #214.80.012 (F/T)			

REMEMBER TO USE COPASLIP® ANTI-SEIZE COMPOUND ON ALL TORX® SCREWS.

TX90 Cylindrical Shank Extended Length End Mills with Coolant

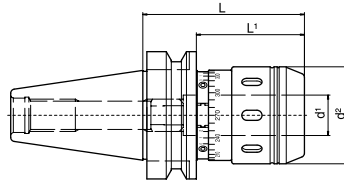


d ¹	DESIGNATION	d ²	Depth of Cut a _p	l ¹	l ²	Flutes
<i>INSERT:</i>				222.79.600 / 610		
.625	TXD90CY-0625-XXLC	.625	.33	6.00	2.00	2
.750	TXD90CY-0750-XXLC	.750	.33	8.00	2.00	2
1.000	TXD90CY-1000-4XXLC	1.000	.33	8.00	2.25	3
<i>Spare Parts: Torx® Insert Screw #214.80.687</i>				<i>Torx® Wrench #214.80.866 (S/D) or #214.80.011 (F/T)</i>		
<i>INSERT:</i>				222.79.400 / 500 / 510 / 564		
1.000	TXP90CY-1000-4XXLC	1.000	.55	8.00	2.25	2
1.250	TXP90CY-1250-5XXLC	1.250	.55	10.00	3.00	3
1.500	TXP90CY-1500-5XXLC	1.250	.55	10.00	---	3
<i>Spare Parts: Torx® Insert Screw #214.80.388</i>				<i>Torx® Wrench #214.80.824 (S/D) or #214.80.012 (F/T)</i>		

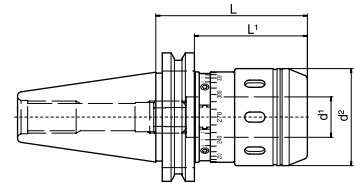
REMEMBER TO USE COPASLIP® ANTI-SEIZE COMPOUND ON ALL TORX® SCREWS.



D'Andrea TopRun Balanceable Force Milling Chucks



MAS403 BT



CAT V-Flange

DESIGNATION	Taper	d ¹	d ²	L	L ¹	KG	Wrench
BT40MC-0750-TR	BT40	.750	1.89	3.15	2.11	1.4	10.150.04.0.0050
BT40MC-1250-TR	BT40	1.250	2.60	3.54	2.56	1.9	10.150.04.0.0075
BT50MC-1250-TR	BT50	1.250	2.60	4.13	2.64	3.1	10.150.04.0.0075
CV40MC-0750-TR	CV40	.750	1.89	2.95	2.17	1.3	10.150.04.0.0050
CV40MC-1250-TR	CV40	1.250	2.60	4.13	---	1.8	10.150.04.0.0075
CV50MC-1250-TR	CV50	1.250	2.60	3.94	3.54	3.0	10.150.04.0.0075

NOTE: other styles are available upon request

TYSON TOOL

TYSON TOOL COMPANY LIMITED
75 ORMONT DRIVE, TORONTO, ONTARIO, M9L-2S3
TEL: (416) 746-3888 ~~ FAX: (416) 748-5415
INTERNET: www.tysontool.com ~~ E-MAIL: sales@tysontool.com



Available from:

Specifications are subject to change without notice. No responsibility for errors and/or printing errors will be accepted.