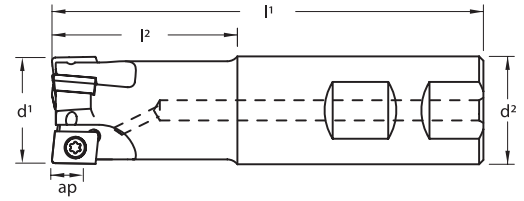


TA90

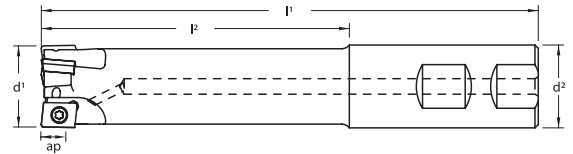
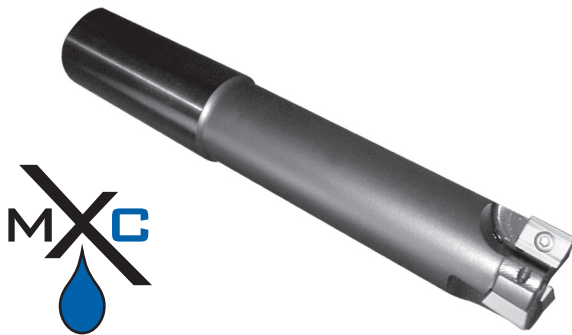
Milling Cutters



Regular Length End Mills with Coolant Through

Designation	d ¹	d ²	ap	l ¹	l ²	flutes	Insert	Insert Screw	Wrench
TA90-0750C	.750	.750	.33	3.50	1.46	2	AONT-10T308	214.80.672	214.80.866 (S/D) 214.80.011 (F/T)
TA90-1000-4C	1.000	1.000	.33	4.00	1.71	3			
TA90-1250C	1.250	1.250	.33	4.00	1.71	4			
TA90-1500C	1.500	1.250	.33	4.40	--	5			

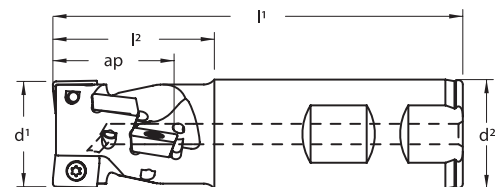
Remember to use COPASLIP® anti-seize compound on all insert screws



Extended Length End Mills with Coolant Through

Designation	d ¹	d ²	ap	l ¹	l ²	flutes	Insert	Insert Screw	Wrench
TA90-0750-XLC	.750	.750	.33	6.00	3.96	2	AONT-10T308	214.80.672	214.80.866 (S/D) 214.80.011 (F/T)
TA90-1000-XLC	1.000	1.000	.33	6.00	3.71	3			
TA90-1250-XLC	1.250	1.250	.33	6.00	3.71	4			
TA90-1500-XLC	1.500	1.250	.33	8.00	--	5			

Remember to use COPASLIP® anti-seize compound on all insert screws



Helical End Mills with Coolant Through

Designation	d ¹	d ²	ap	l ¹	l ²	flutes	# of inserts	Insert	Insert Screw	Wrench
THA90-1000	1.000	1.000	1.10	3.77	1.49	2	6	AONT-10T308	214.80.672	214.80.866 (S/D) 214.80.011 (F/T)
THA90-1250	1.250	1.250	1.45	4.33	2.05	3	12			

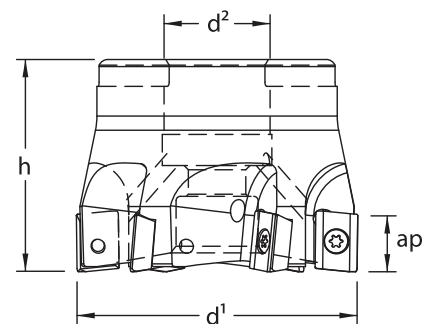
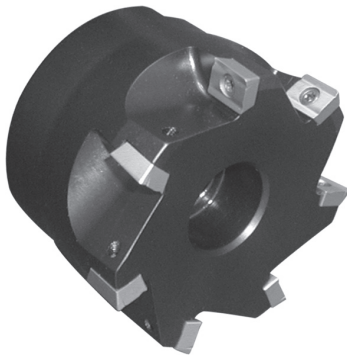
Remember to use COPASLIP® anti-seize compound on all insert screws

TA90

Milling Cutters

The newly developed TA90 end and face mills, in conjunction with our new Widia AONT carbide inserts, deliver exceptional performance in all milling applications. The strengthened inserts offer excellent results in slotting, as well as peripheral milling.

Although designed for rapid metal removal, the TA90 still produces excellent surface finishes. The insert is available in 3 cutting geometries, ML for light machining, MM for medium machining and MH for heavy machining. To ensure utmost performance on all materials, these inserts are available in a variety of high performance milling grades.



Face Mills

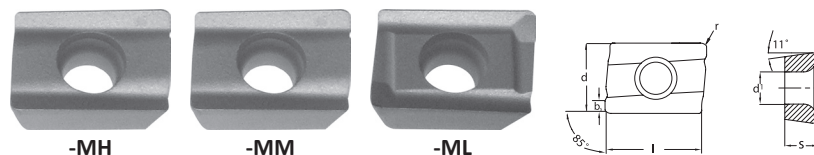
Designation	d ¹	d ²	ap	h	flutes	lbs	Insert	Insert Screw	Wrench
TA90-2000	2.00	.750	.33	1.50	6	.75	AONT-10T308	214.80.672	214.80.866 (S/D) 214.80.011 (F/T)
TA90-2500	2.50	1.000	.33	1.75	7	1.55			
TA90-3000	3.00	1.000	.33	2.00	8	2.35			
TA90-4000	4.00	1.500	.33	2.00	10	3.15			

Remember to use COPASLIP® anti-seize compound on all insert screws

MH - for heavy machining (scale, severe interruptions)

MM - for medium range metal removal with reinforced cutting edge

ML - for light machining, especially suited for stainless steels, including austenitic and martensitic



AONT- ...																						
Designation	l	s	r	d	d'	bs	TN7525	TN6525	TN7535	TN6540	TN450	TN5515	TN6510	TN6520	TN2510	TN6501	TN6502	TTM	TTR	THM	TTI-25	
	Coated																Uncoated		Cermet			
AONT-10T308-MH	.407	.156	.031	.297	.134	.039	●	●	●	●	●	●	●	●	●	●	●	●	●	●	●	●
AONT-10T308-MM	.407	.156	.031	.297	.134	.039	●	●	●	●	●	●	●	●	●	●	●	●	●	●	●	●
AONT-10T308-ML	.407	.156	.031	.297	.134	.039	●	●	●	●	●	●	●	●	●	●	●	●	●	●	●	●