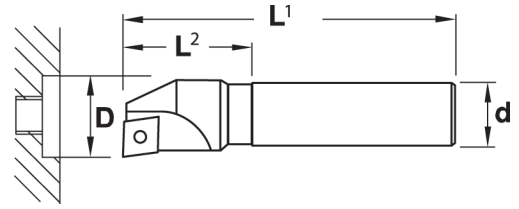
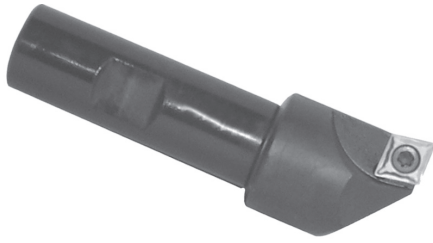


# TCCBE

## Counterbore Milling Cutters



### End Mills for Counterboring - INCH

Designation	Cap Screw Size	D	d	L <sup>1</sup>	L <sup>2</sup>	Insert	Insert Lock Screw #	Wrench
TCCBE-025-CC2	1/4	.406	.500	3.00	.59	CCM_-21.5_	C-1425	C-5507
TCCBE-031-CC2	5/16	.500	.500	3.00	.74			
TCCBE-037-CC3	3/8	.594	.625	3.50	1.18	CCM_-32.5_	C-1440	C-5515
TCCBE-050-CC3	1/2	.781	.625	3.50	1.26			
TCCBE-062-CC3	5/8	.969	.750	3.50	1.26			
TCCBE-075-CC3	3/4	1.188	.750	3.50	1.26			

Remember to use COPASLIP® anti-seize compound on all insert screws

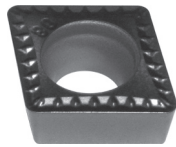
### End Mills for Counterboring - METRIC

Designation	Cap Screw Size	D	d	L <sup>1</sup>	L <sup>2</sup>	Insert	Insert Lock Screw #	Wrench
TCCBE-M6-CC2	M6	11	12	85	15	CCM_-21.5_	C-1425	C-5507
TCCBE-M8-CC2	M8	14	12	85	19			
TCCBE-M10-CC3	M10	17	16	95	30	CCM_-32.5_	C-1440	C-5515
TCCBE-M12-CC3	M12	19	16	95	32			
TCCBE-M14-CC3	M14	22	16	95	32			
TCCBE-M16-CC3	M16	25	16	95	32			

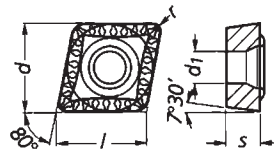
Remember to use COPASLIP® anti-seize compound on all insert screws



CCMT



CCMT-MU



### TCCBE Inserts

Designation	l	s	r	d	d <sup>1</sup>	Coated						Uncoated			Cermet	
						TN7110	TN7115	TN7125	TN7135	TN8025	TN5105	TN5120	TTM	TTR	THM	THR
CCMT-21.51	.254	3/32	1/64	1/4	.114	●	●	●	●	●			●	●		
CCMT-21.51T			1/64										●	●		
CCMT-21.52			1/32			●	●									
CCMT-32.51	.380	5/32	1/64	3/8	.173	●	●	●					●	●		
CCMT-32.52			1/32			●	●						●	●		
CCMT-32.53			3/64			●	●						●			
CCMT-32.51-MU	.380	5/32	1/64	3/8	.173	●	●	●								
CCMT-32.52-MU			1/32			●	●	●								