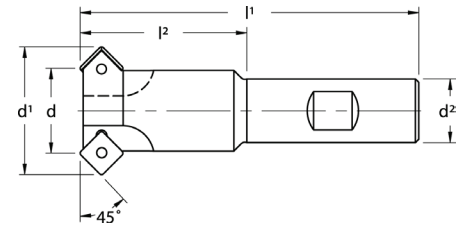


# TS45

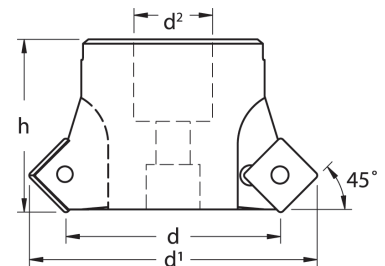
## 45° Chamfer Milling Cutters



### End Mills

Designation	d	d <sup>1</sup>	d <sup>2</sup>	l <sup>1</sup>	l <sup>2</sup>	Flutes	Chamfer Min-Max	Insert	Insert Screw	Wrench
<b>Regular Length</b>										
TSD45-0625	.625	1.130	.750	3.00	.97	2	.67 - 1.11	SDMW-322 SDNT-322	214.80.951	214.80.824 (S/D) 214.80.012 (F/T)
TSD45-0750	.750	1.255	.750	3.30	1.27	2	.79 - 1.235			
TSD45-1000	1.000	1.505	.750	4.00	1.97	2	1.04 - 1.48			
TSD45-1250	1.250	1.755	1.250	4.00	1.72	3	1.29 - 1.73			
TSP45-1500	1.500	2.182	1.250	4.00	1.72	3	1.54 - 2.11	SPMW-432 SPNT-432	214.80.072	214.80.994 (S/D) 214.80.076 (F/T)
<b>Extended Length</b>										
TSD45-0625-L	.625	1.130	.750	8.00	1.49	2	.67 - 1.11	SDMW-322 SDNT-322	214.80.951	214.80.824 (S/D) 214.80.012 (F/T)
TSD45-1000-L	1.000	1.505	1.000	8.00	1.49	2	1.04 - 1.48			

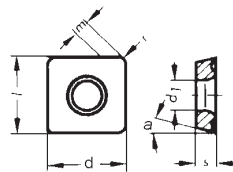
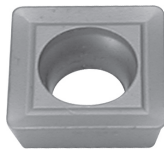
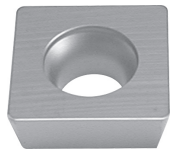
Remember to use COPASLIP® anti-seize compound on all insert screws



### Face Mills

Designation	d	d <sup>1</sup>	d <sup>2</sup>	h	Flutes	Chamfer Min-Max	Insert	Insert Screw	Wrench
TSP45-2000	2.000	2.680	.750	1.60	4	2.04 - 2.66	SPMW-432 SPNT-432	214.80.072	214.80.076 (F/T) 214.80.994(S/D)

Remember to use COPASLIP® anti-seize compound on all insert screws



SDMW / SPMW

SDNT / SPNT

### TS45 Inserts

Designation	l	s	r	d	d <sup>1</sup>	m	a	Coated					Uncoated			Cermet				
SDMW-322	.375	1/8	1/32	3/8	.173	.065	15°	●							●	●	●			
SPMW-432	.500	3/16	1/32	1/2	.217	.091	11°				●				●	●	●	●		
SDNT-322	.375	1/8	1/32	3/8	.173	.065	15°	●	●					●	●	●				
SPNT-432	.500	3/16	1/32	1/2	.217	.091	11°	●	●					●	●	●				